



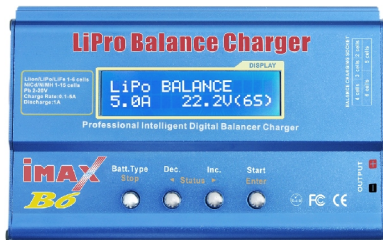
Charger Monitor

CHARGER MONITOR

Instruction Manual

IMAX Intelligent Digital Balance Charger

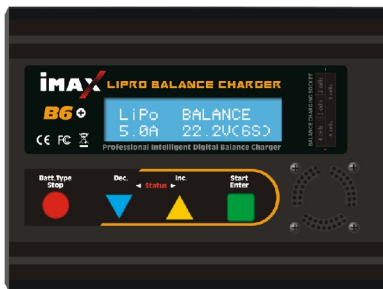
This instruction manual is for the following range of IMAX chargers.



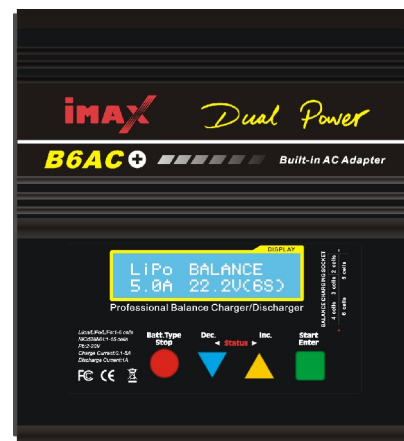
IMAX B6



IMAX B6AC



IMAX B6+



IMAX B6AC+



IMAX B8

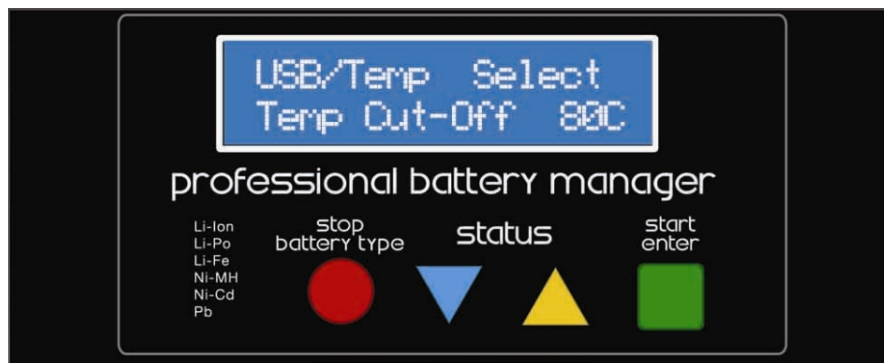
(Separate ports for Temperature sensor and Charger to PC port)

! Note:

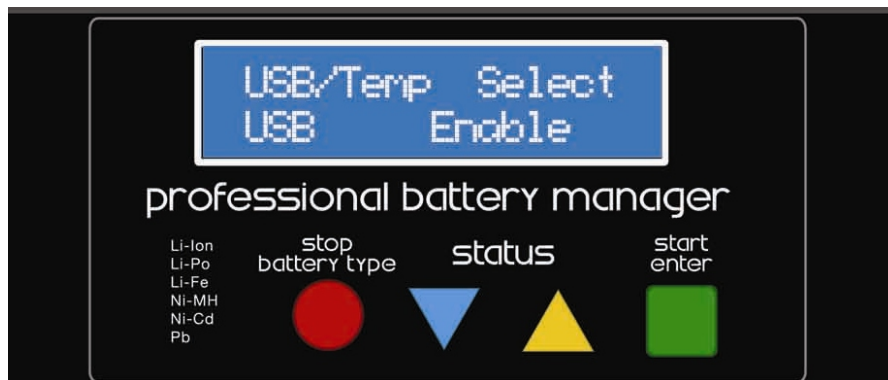
1. IMAX B6+
2. IMAX B6
3. IMAX B6AC
4. IMAX B6AC+

The above chargers use the same port for Temperature sensor (Temp Cut-Off) and USB to PC interface. Therefore, only one function at a time can be activated. The Default function is Temp Cut-Off. *Diag 1*

1. When in USB mode, the temperature graph is at 0.



Diag 1 Temp Cut-Off selected (Default)



Diag 2 USB Enable

To Use the USB to PC interface, please do the following.

1. Press the Dec or Inc button till you reach "User Set Program" option.
2. Press Start/Enter
3. Press Dec or Inc till you reach USB/Temp Select.
4. Press Start/Enter. You should see the Temp Cut-Off going on and off.
5. Click Dec or Inc once. "USB Enable" will appear on the screen. See Diag 2
6. Press Start/Enter to confirm. Then press Batt Type/Stop to Exit the set up.

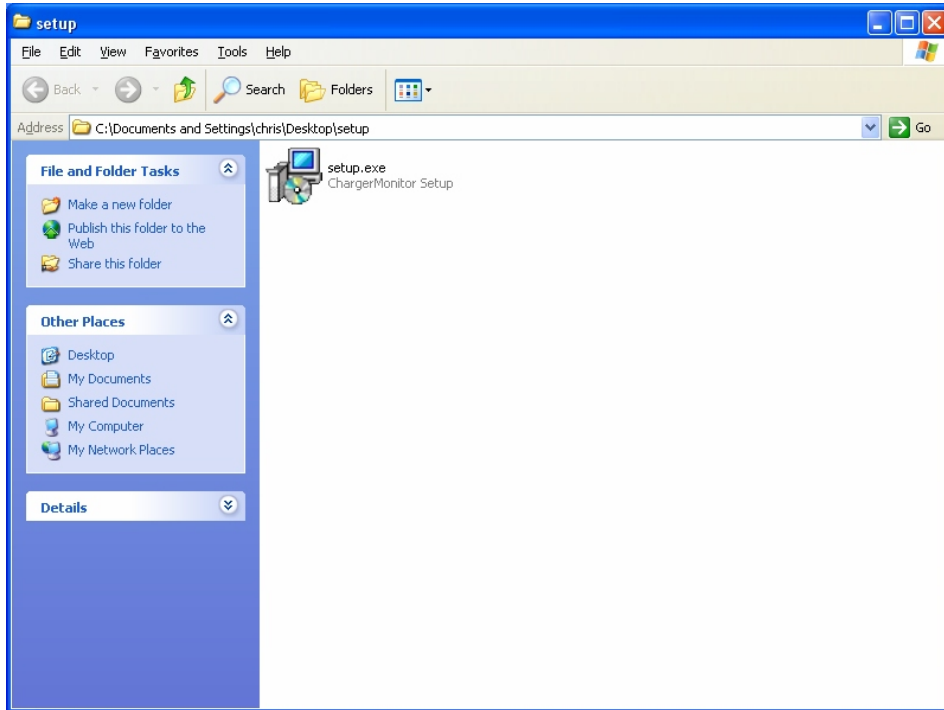
Installation of the IMAX Intelligent Digital Balance Charger Drive

Step 1

Insert the CD into the CD/DVD drive. Double click the drive icon to open it. You should come to a window like the one Shown below.

Step 2

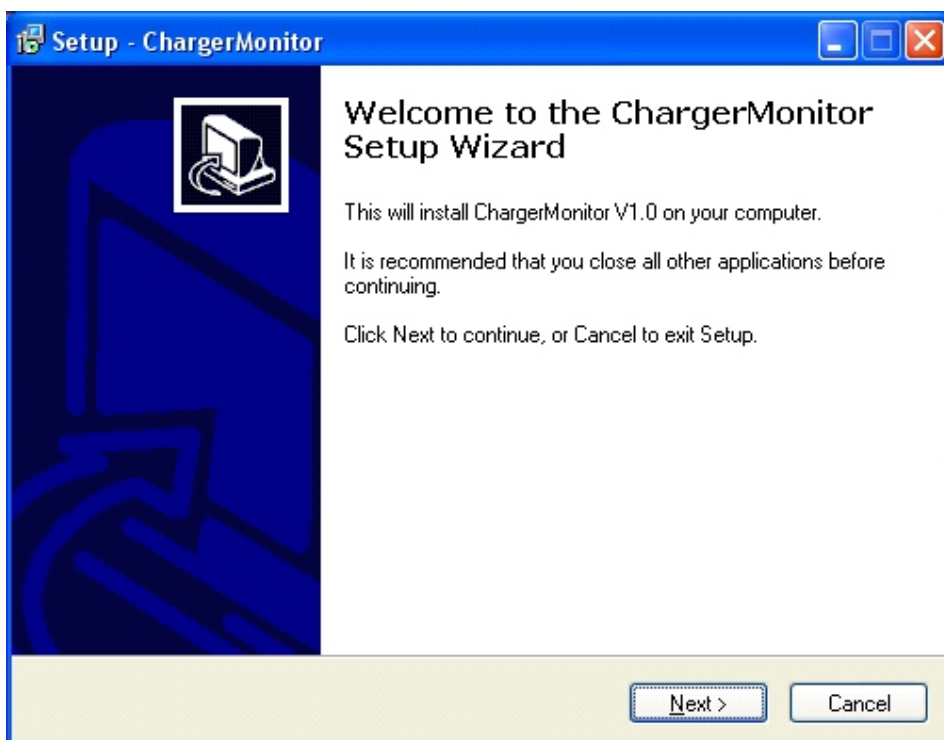
Double click the Setup.exe icon.



Setup Icon

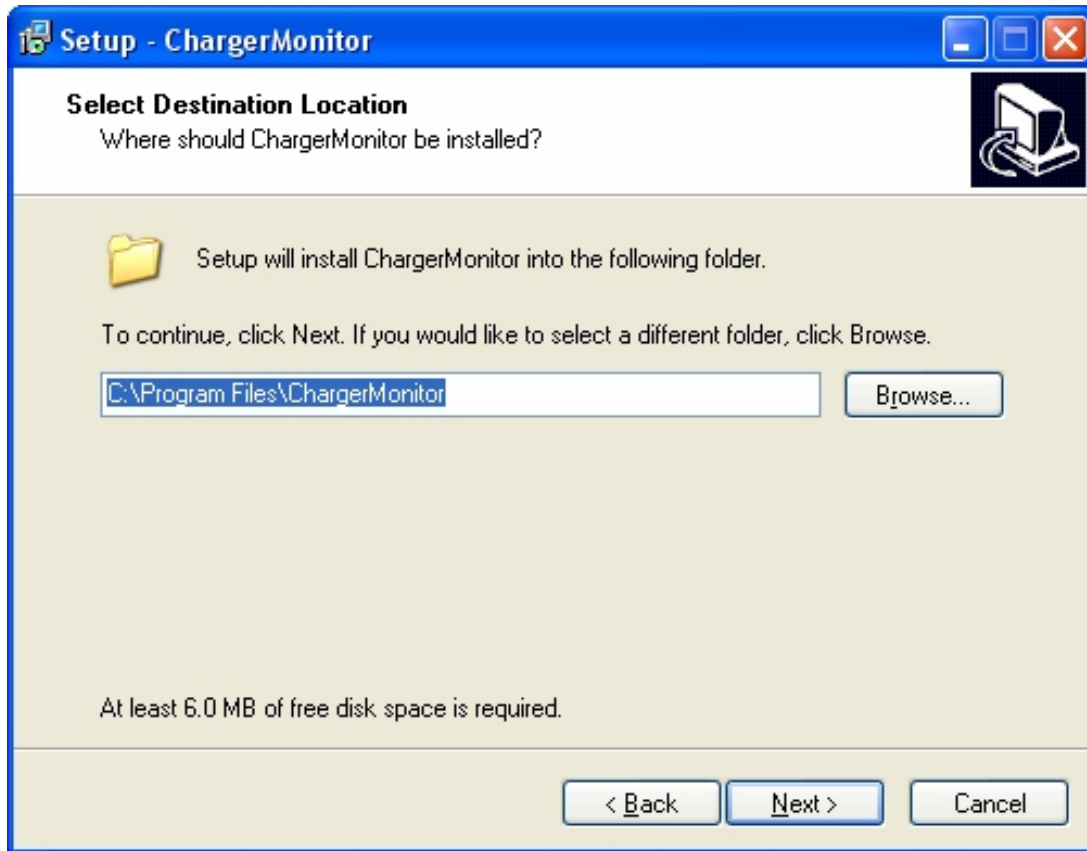
Step 3

The "Setup-chargerMonitor" window will come up. Please follow the rest of the setup procedure to complete the installation. Click next.



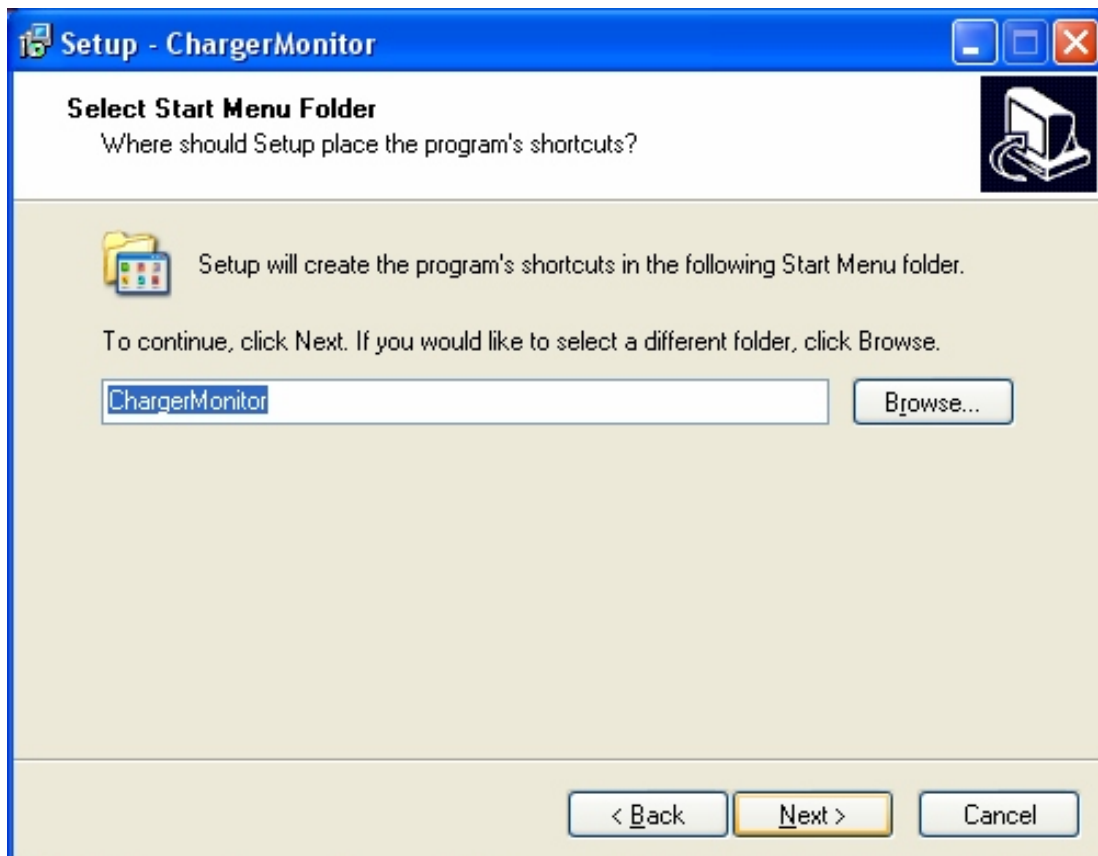
Step 4

In Case you want to install in another partition other than C, you can use the next window to do so.

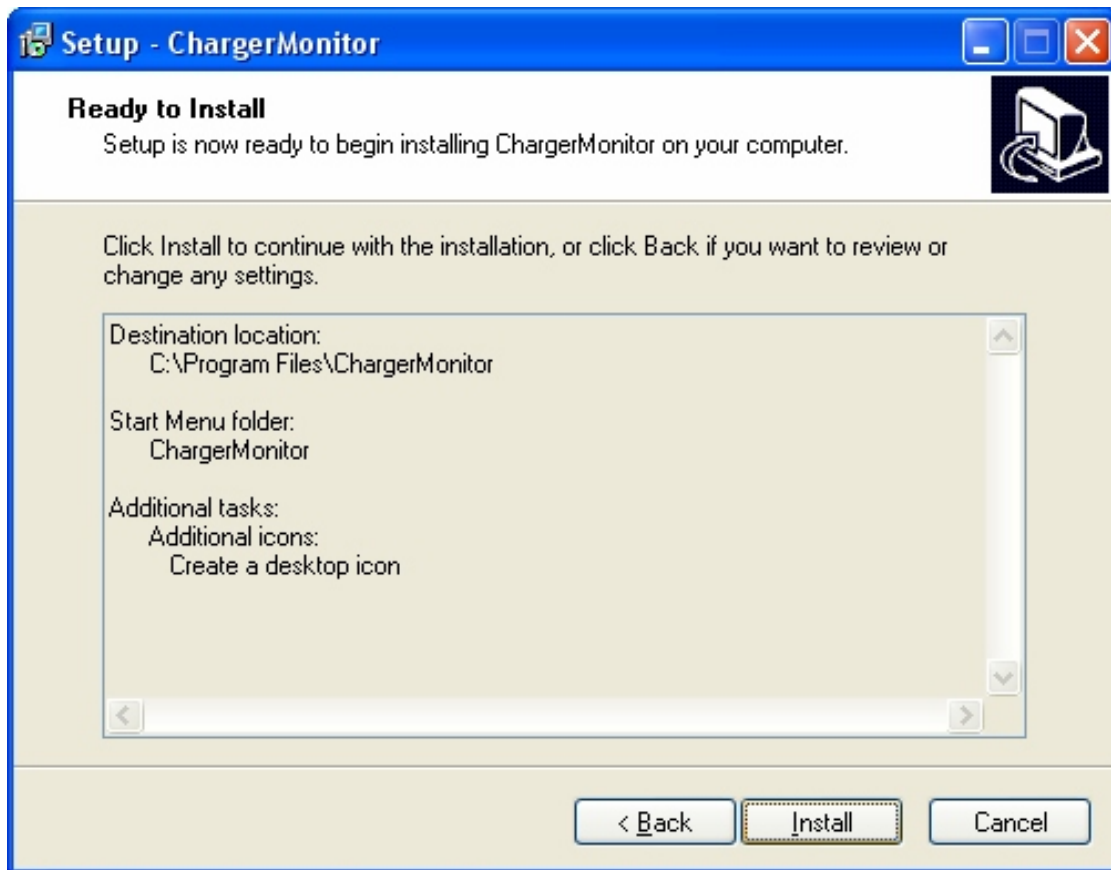


Step 5

Click Next

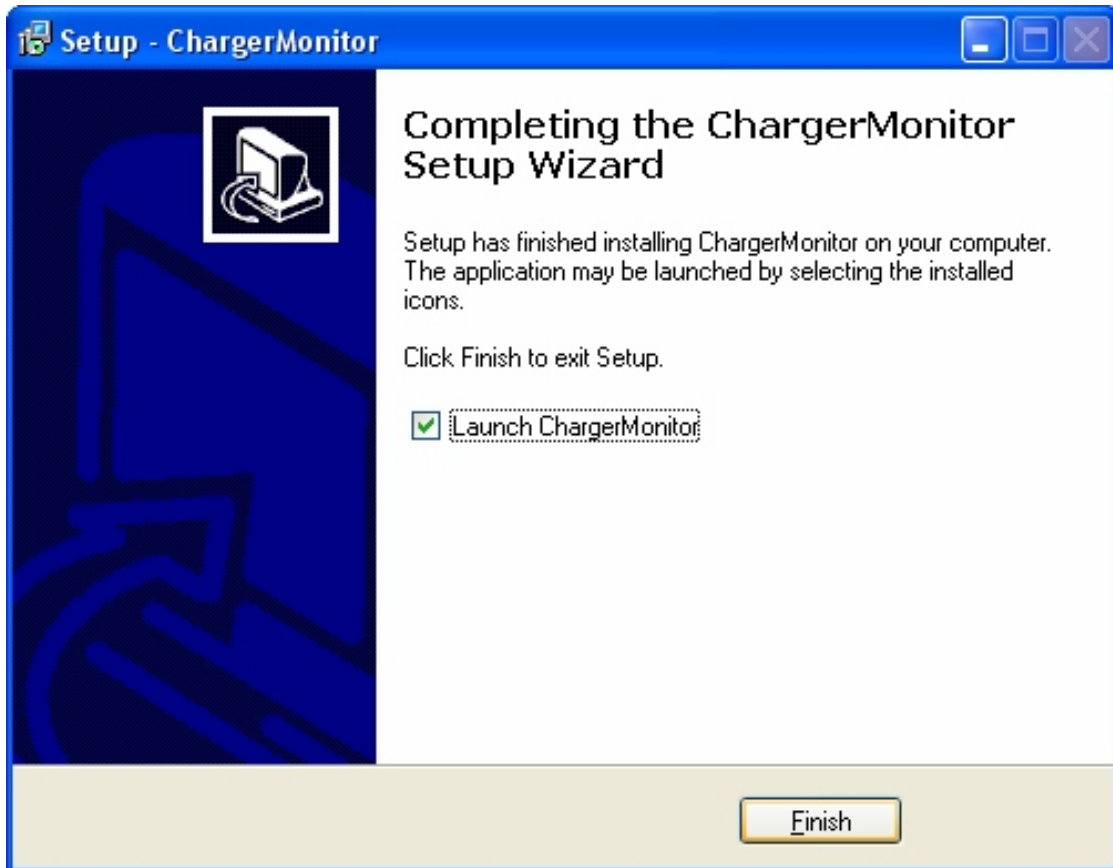


Step 6
Click Install



Step 7

Click Finish to launch the software. Or recheck “Launch ChargerMonitor” then “Finish” to launch the program at some other time.



Operation of the software

Step 1

If you clicked “Finish” without unchecking the “Launch ChargerMonitor”, you should come to the window below.

Alternatively, you can also open the software by double clicking the “ChargeMonitor” icon on the desktop or from the start button.

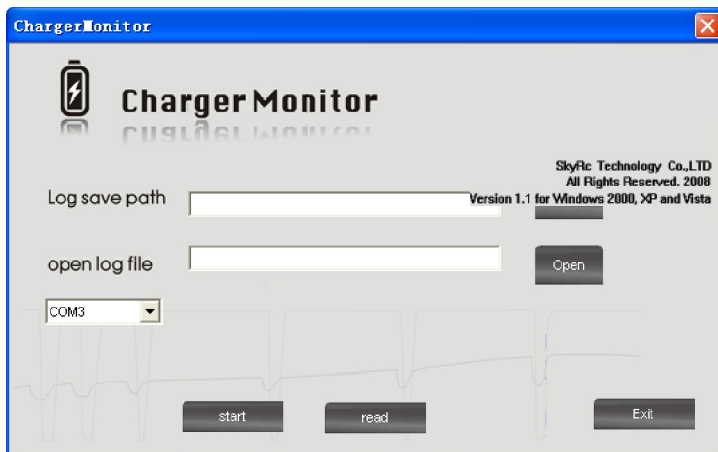
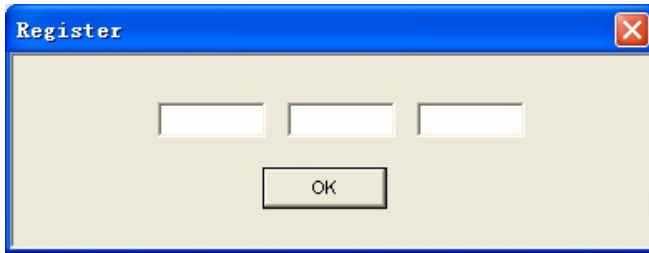
Start → All Programs → ChargerMonitor → ChargerMonitor

To create a folder and file for your immediate charging session, Click on “Save”

Step 2



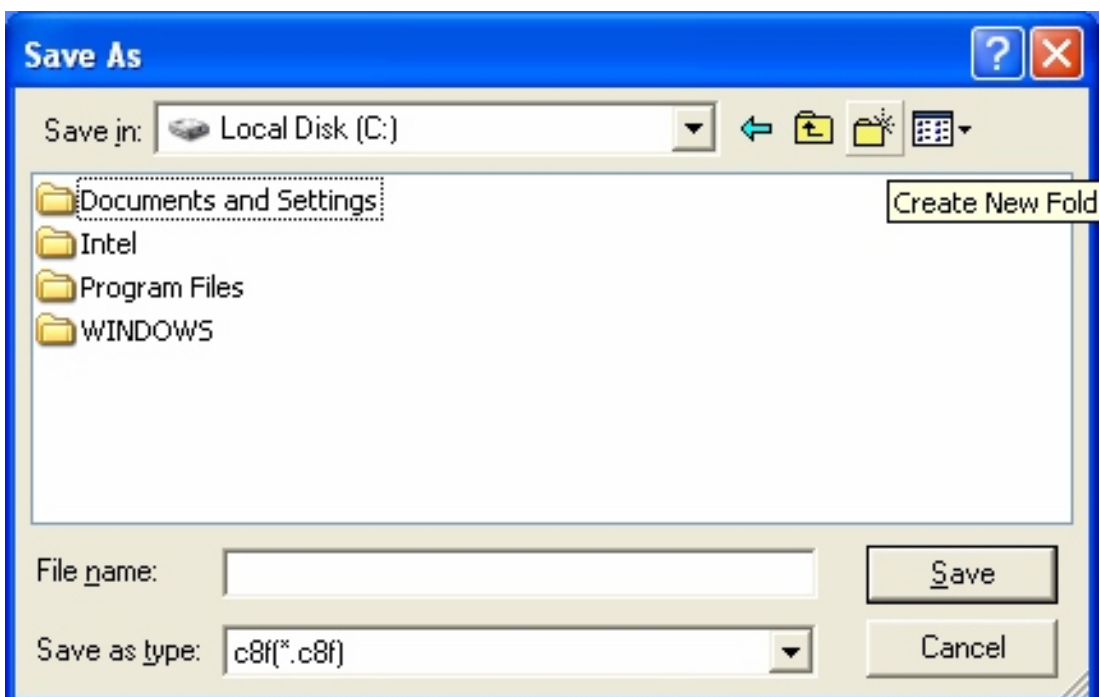
Please register by inputting the serial number which is contained in the file of SN.TXT to use this software.



Step 3

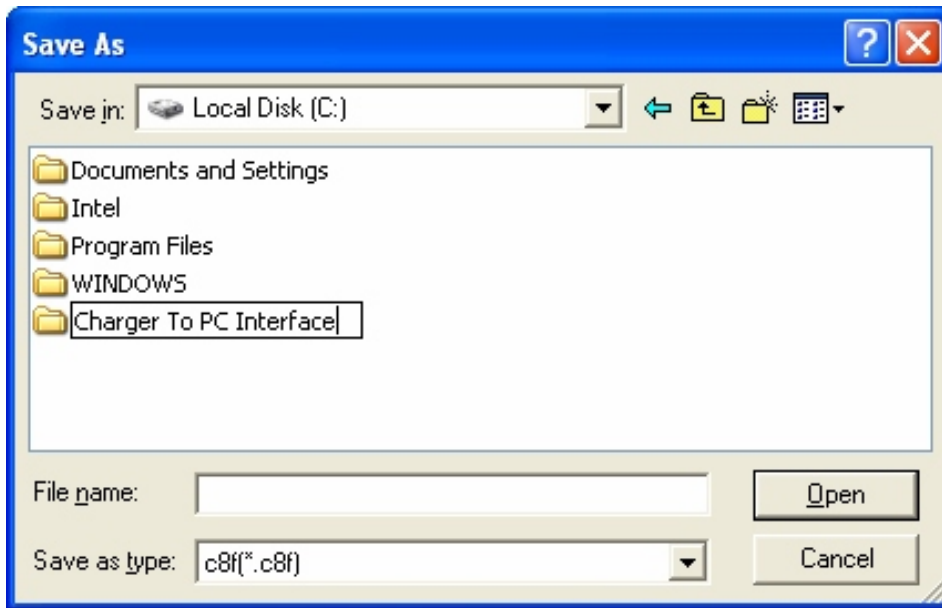
You should come to a window like the one below.

Click on the "Create New Folder" icon to create a new folder. (Other sessions can also make use of this same folder)



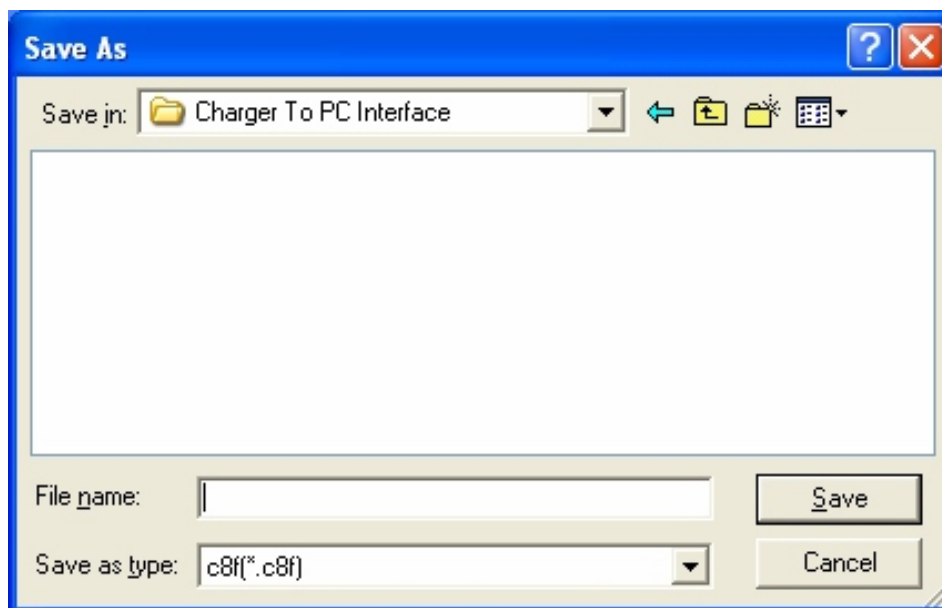
Step 4

Give the folder a new name to identify it. In this case, we call it “Charger To PC Interface.”



Step 5

Double Click the folder, in this case “Charger To PC Interface” to open it.

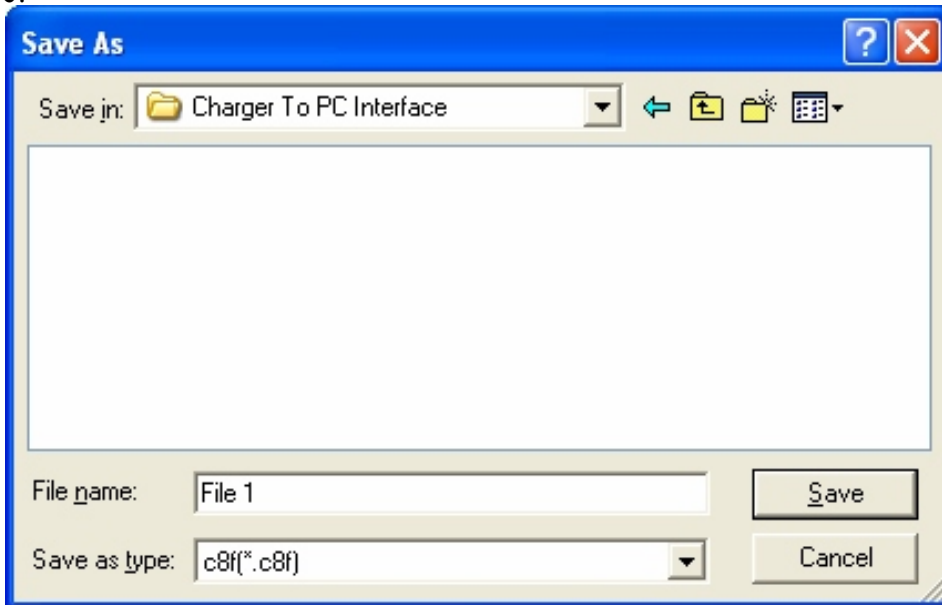


The opened folder

Step 6

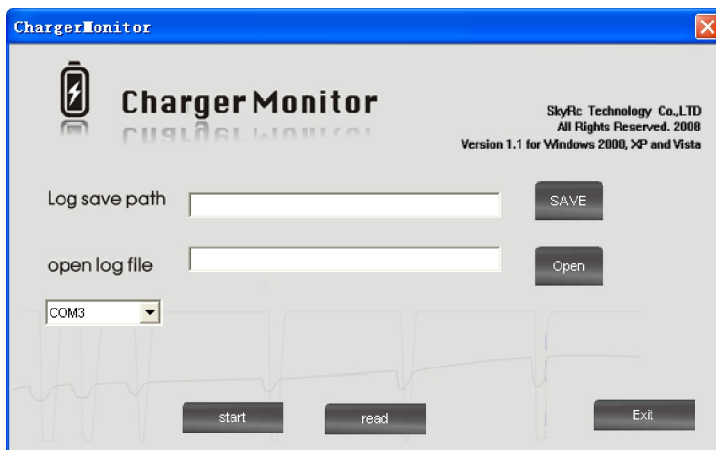
Create a file for this session by typing a name in the “File name” box.
In this case, we name this session “File 1”

Click Save.



Step 7

You should come to the window below.

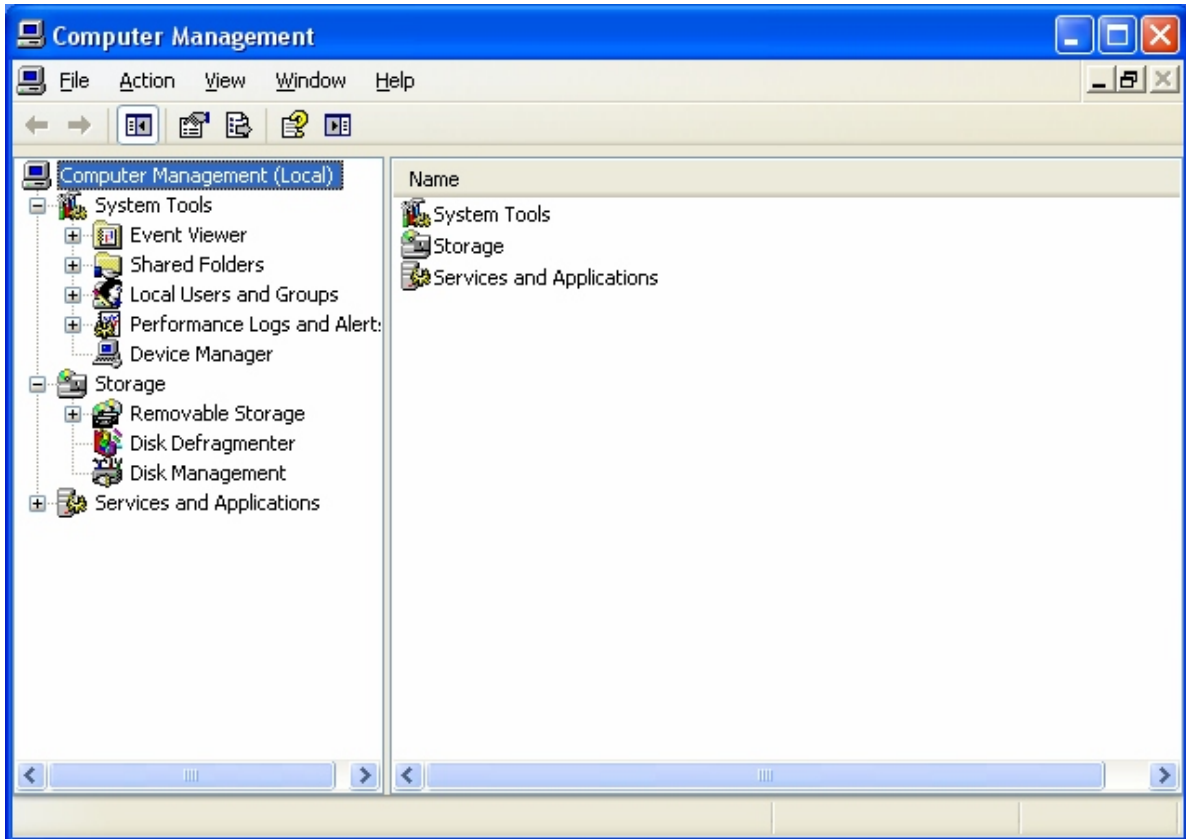


Step 7

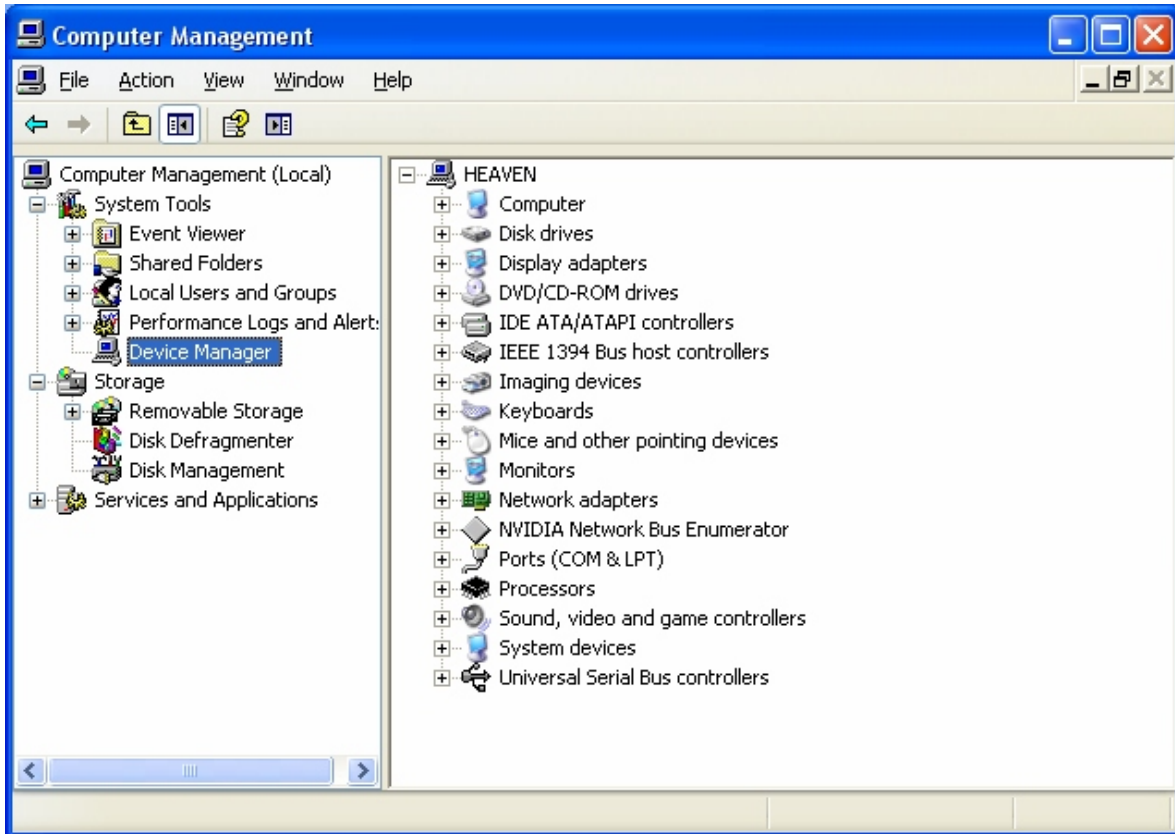
To make sure that the charger will operate on the right port number, please do the following.

- a) Right click “My Computer”
- b) Then right click “Manage” . You should come to “Computer Management” window.
- c) Left Click “Device Manager” .
- d) Locate “Ports (COM & LPT)” and click the box on its left.
- e) Take note of the following port number “Silicon LabsCP210 x USB to UART Bridge COM3” (In this case COM3)

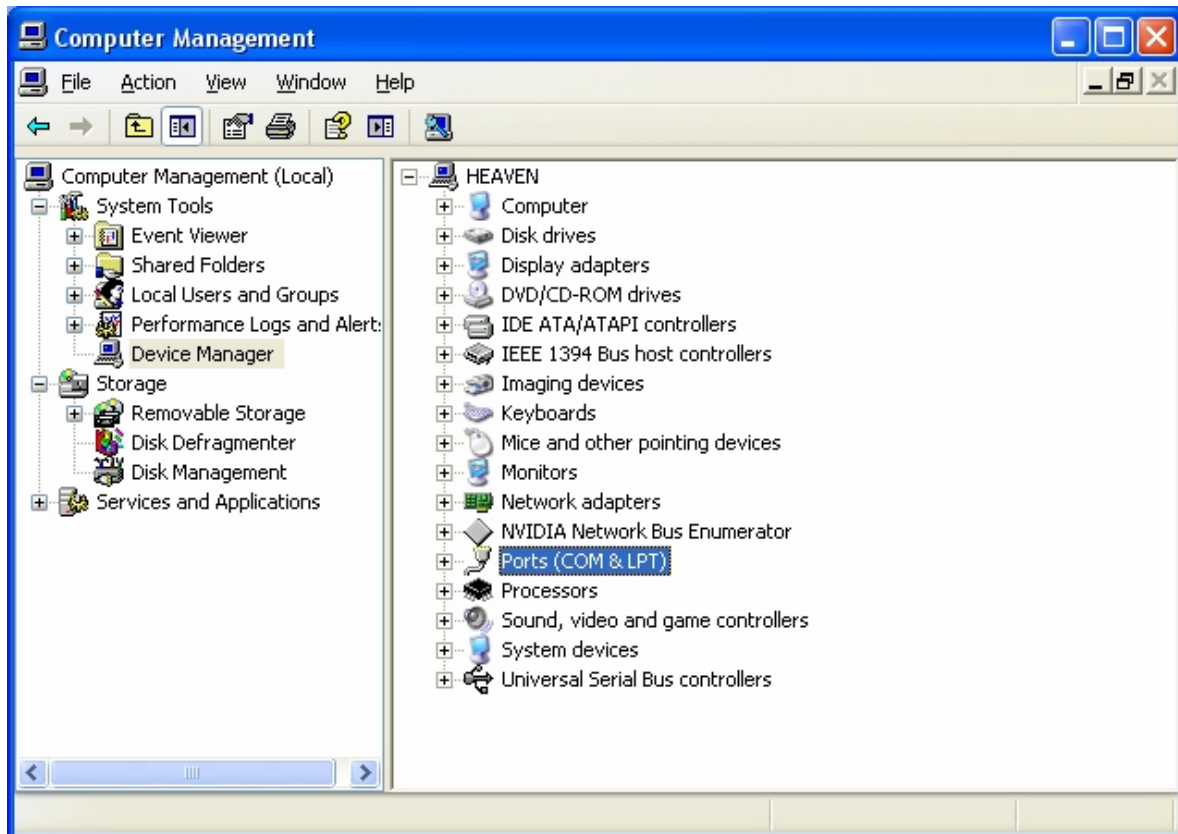
Diagram step by step illustration



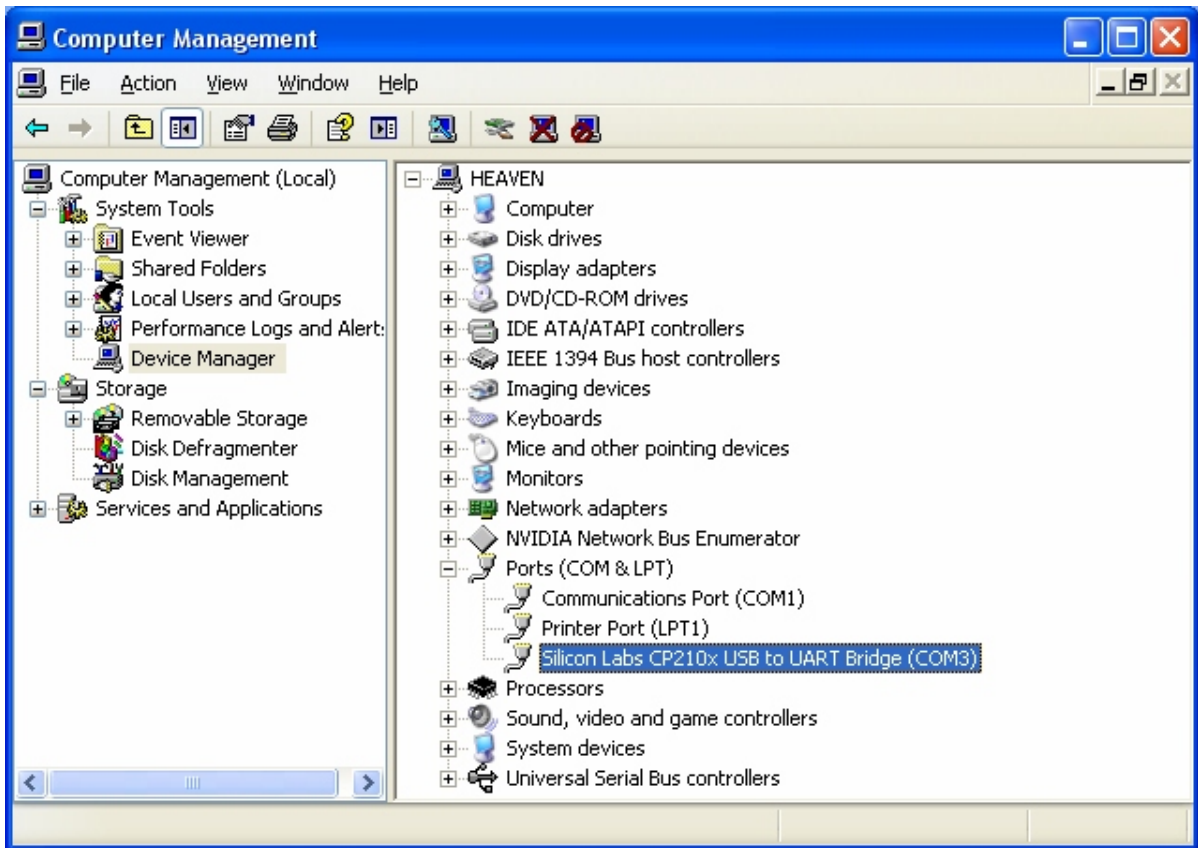
Computer Management (Local)



Device Manager shown



Ports (COM & LPT) Shown



What you should see after Clicking the “+” Box close to Ports (COM & LPT). In this case, we have COM3. Close the window.

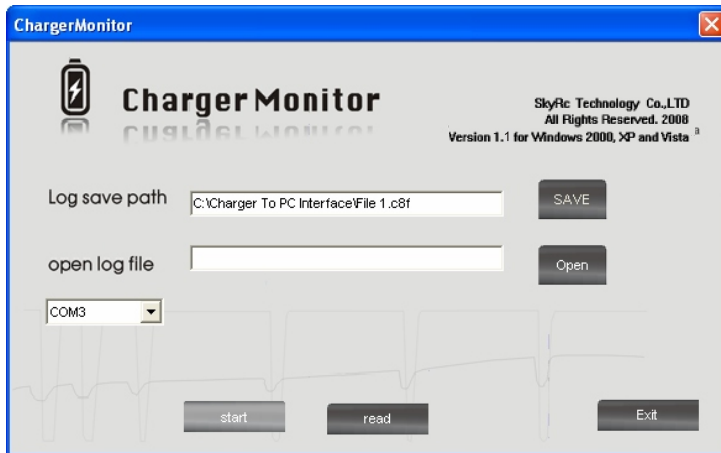
Step 8

Click on the Com option’ s down arrow and select the appropriate Com setting.

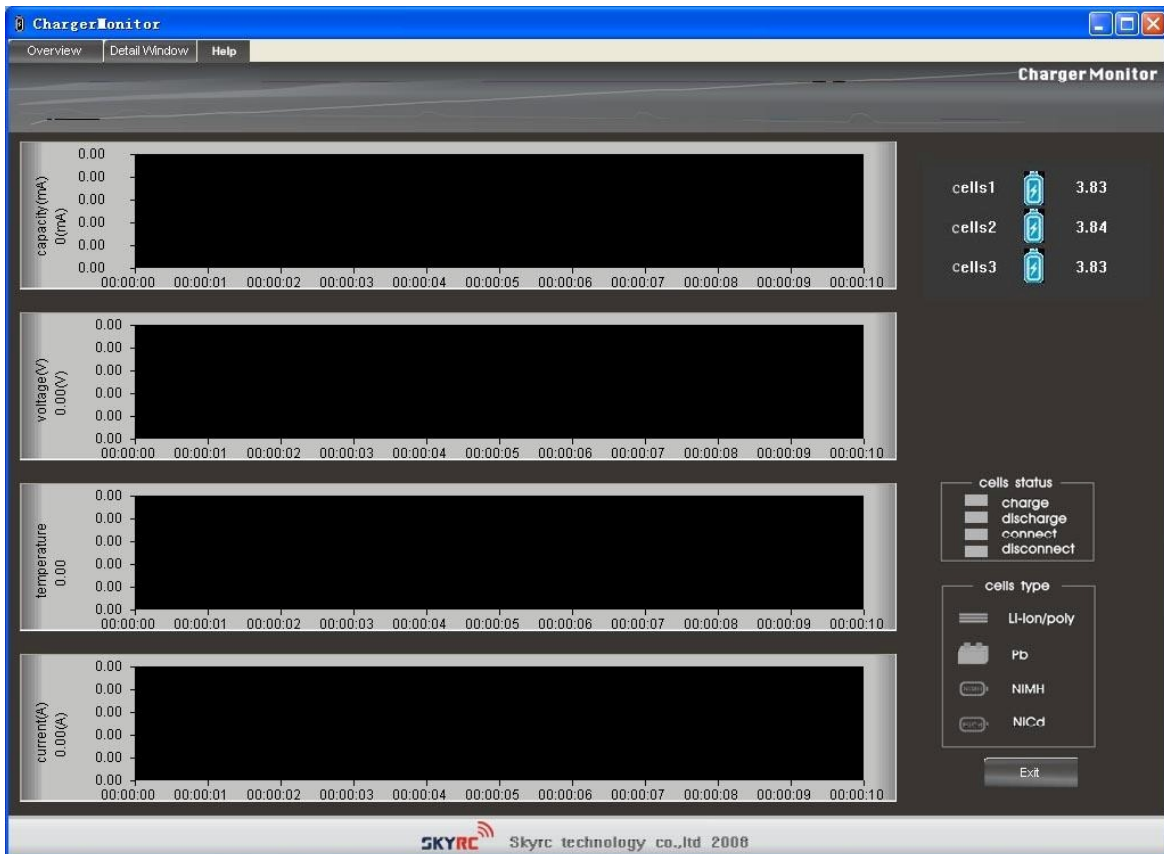


Step 9

Connect your charger to the power supply and connect the Charger to PC interface cable to the charger and USB port of the PC. Then Click on start.



A program window like the one below will come up.



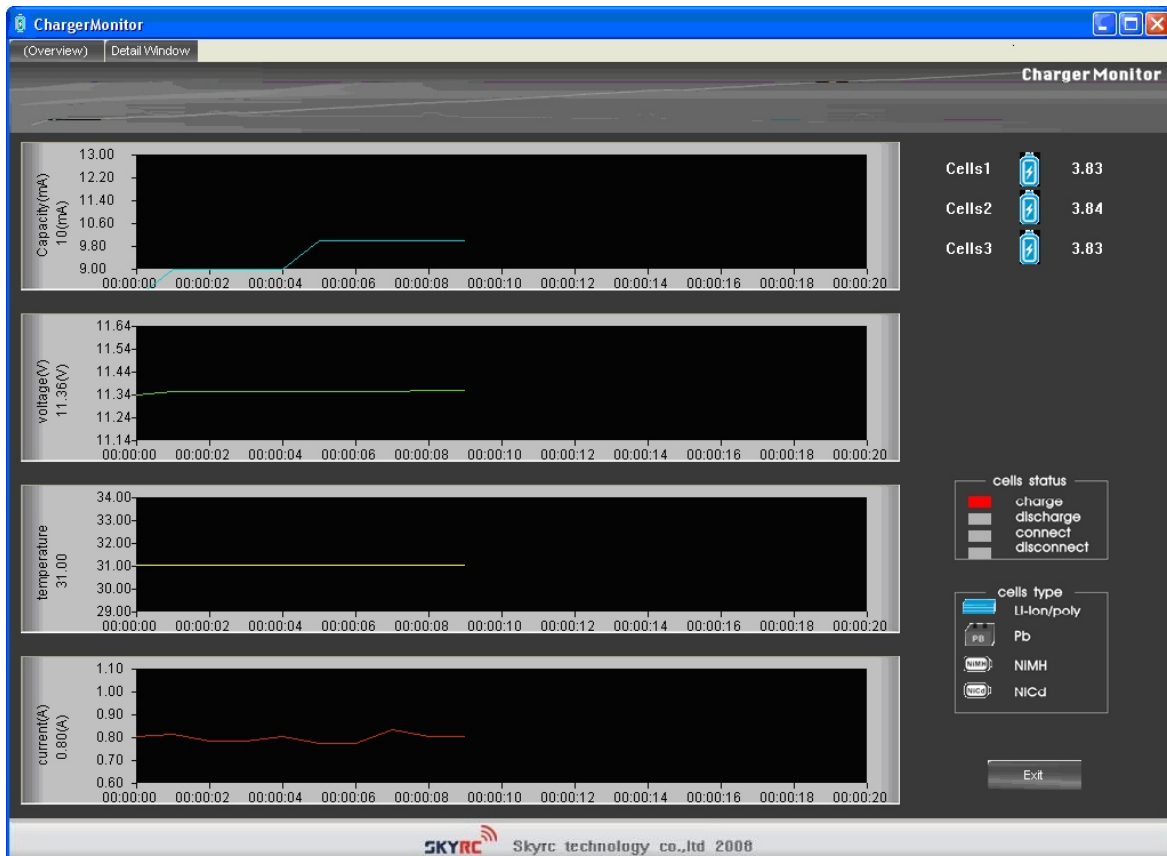
Program Window

Charging Process

Step 1

After connecting your batteries, and start charging them, you should see some information in the overview window.

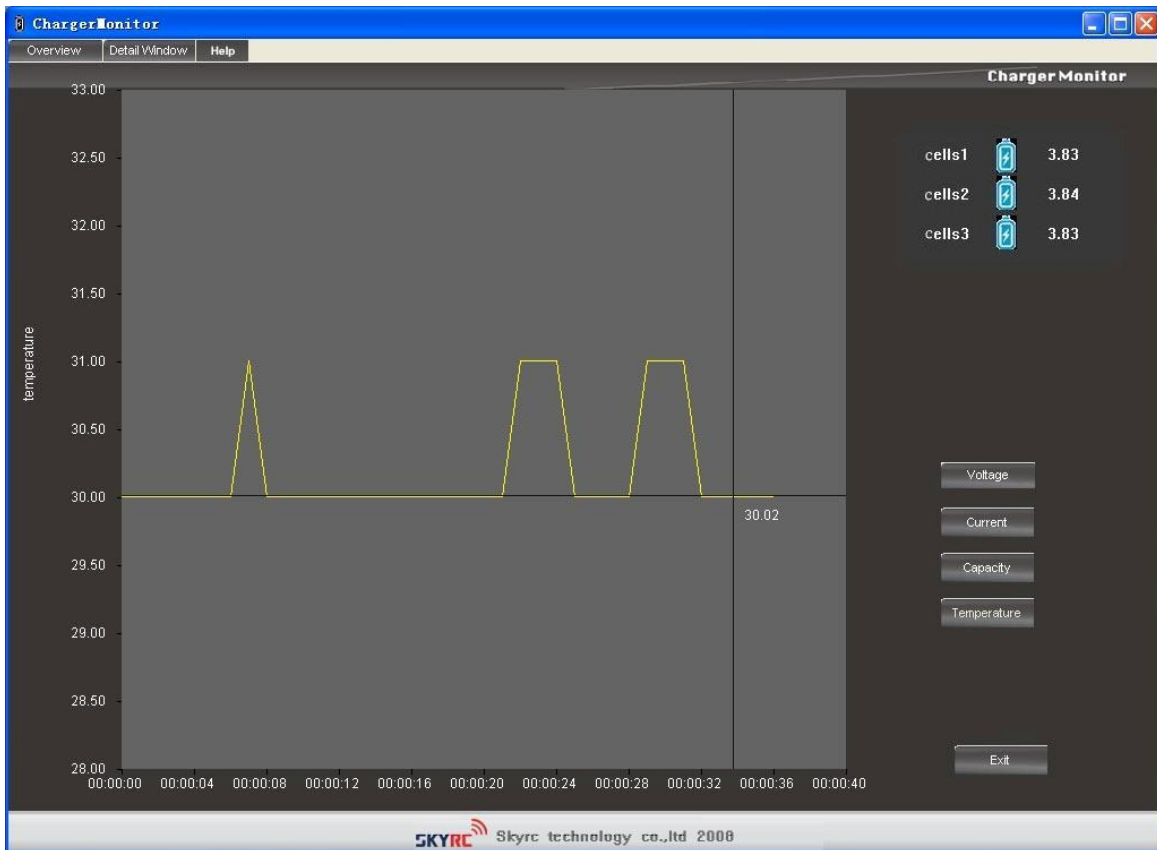
Note: Please confirm that the number of batteries on the top right of the overview window is the same with the actual number of batteries connected to the charger.



Overview window

Step 2

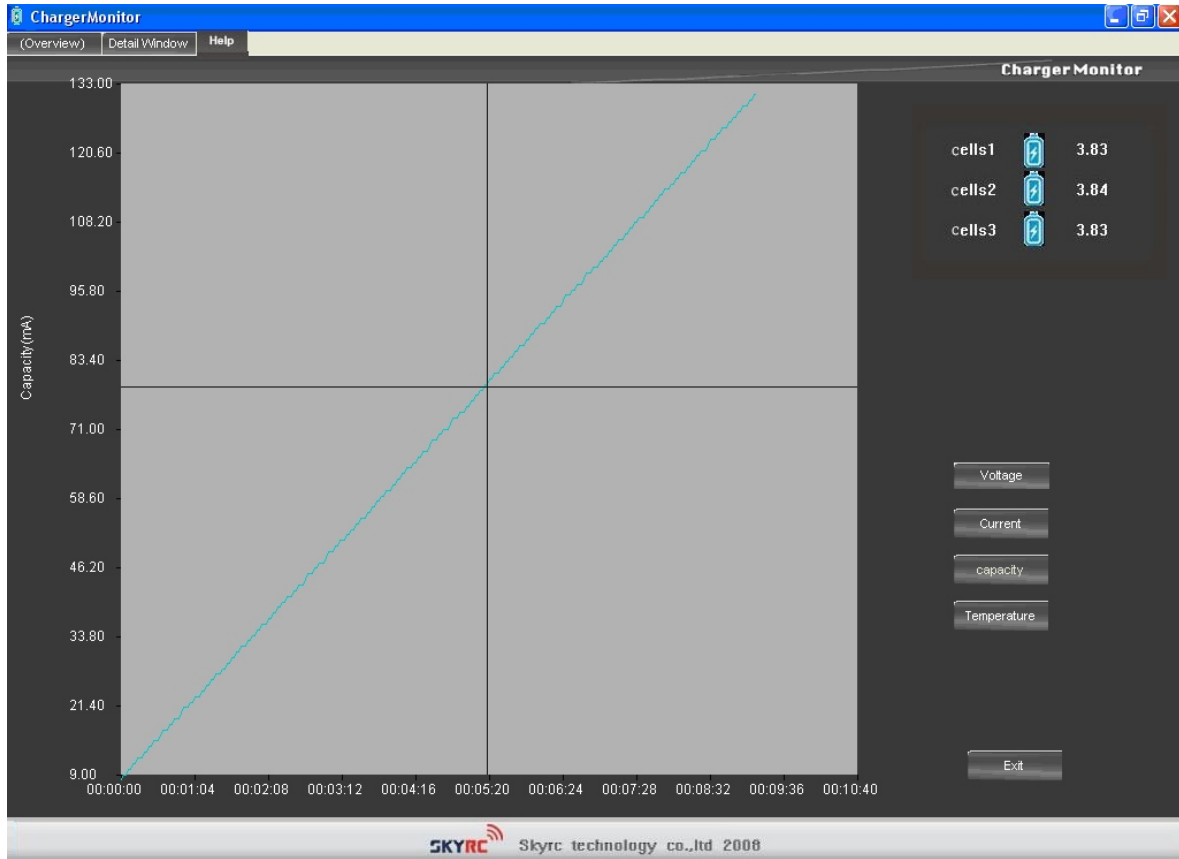
Please click on Detail Window to view more information.



Detail window: Voltage

Step 3

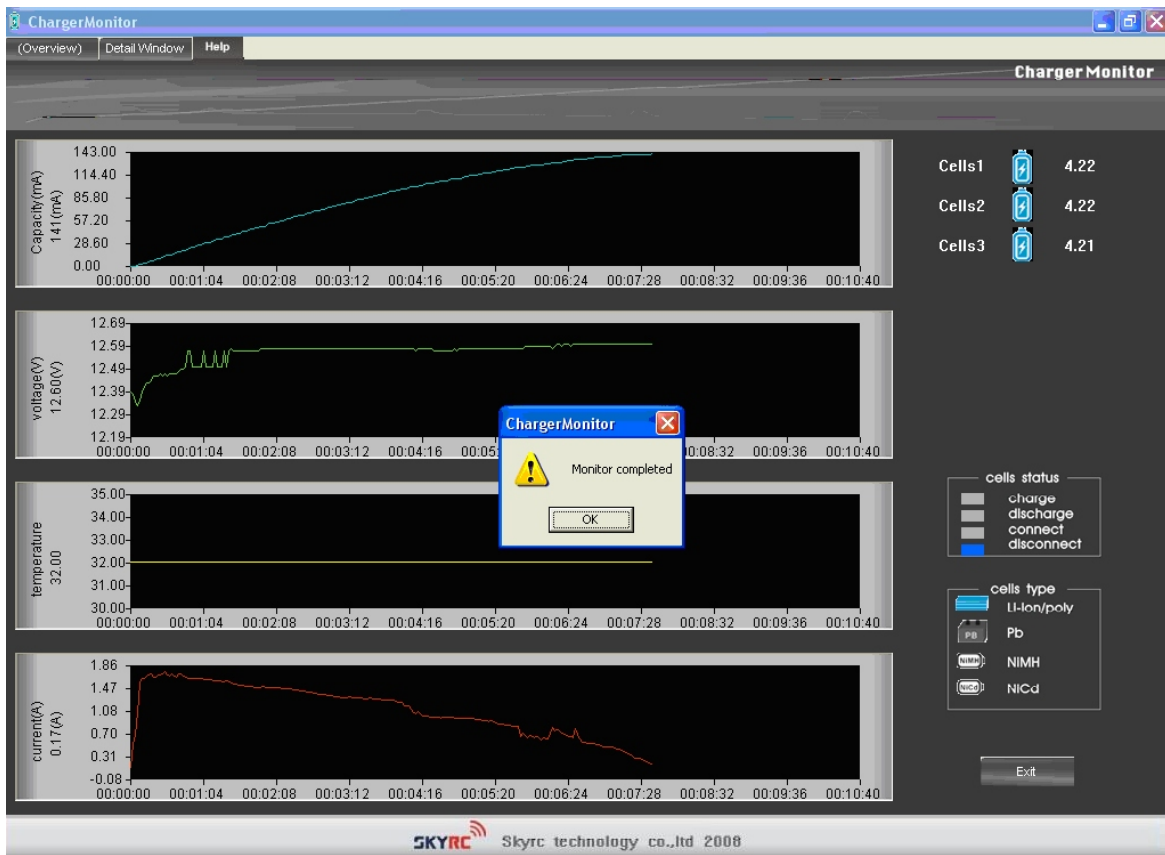
To see the exact figures at a particular point in time on the overview window, right click on the point you want to check. You should see an intersection of two lines at the clicked point.



Illustrating how to view the actual figures for a certain point

Step 4

When the battery is fully charged, you should see the notification window below. Click ok to confirm.



Charging successfully completed