

Legend:

- Power
- **IN** Power Input
- **OUT** Power Output
- Ground
- GPIO Digital External
- Analog External
- Main Part
- Secondary Part
- Internal Component
- Other Pins (Reset, System Control, Debugging)
- I2C
- SPI
- UART/USART
- Other SERIAL Communication
- Analog
- PWM/Timer
- Ⓜ Default
- Ⓜ Default
- Ⓜ Default
- Ⓜ Default

- Ⓜ LED
- Ⓜ RGB LED
- Short Circuit allowed functions

- ⚠ **MAXIMUM** output current per pin is 15mA
- ⚠ **MAXIMUM** input current per pin is 5mA
- ⚠ **MAXIMUM** current overall is 25mA for the sum of all GPIOs and VDDs
- ! **VIN** 5-21V input to the board
- i CIP0/COPI have previously been referred to as MISO/MOSI

NANO 33 SENSE		
REV2	BOARD	BLE

SKU code: ABX00069
 Full Pinout - Page 1 of 4
 Last update: 22 Dec, 2022

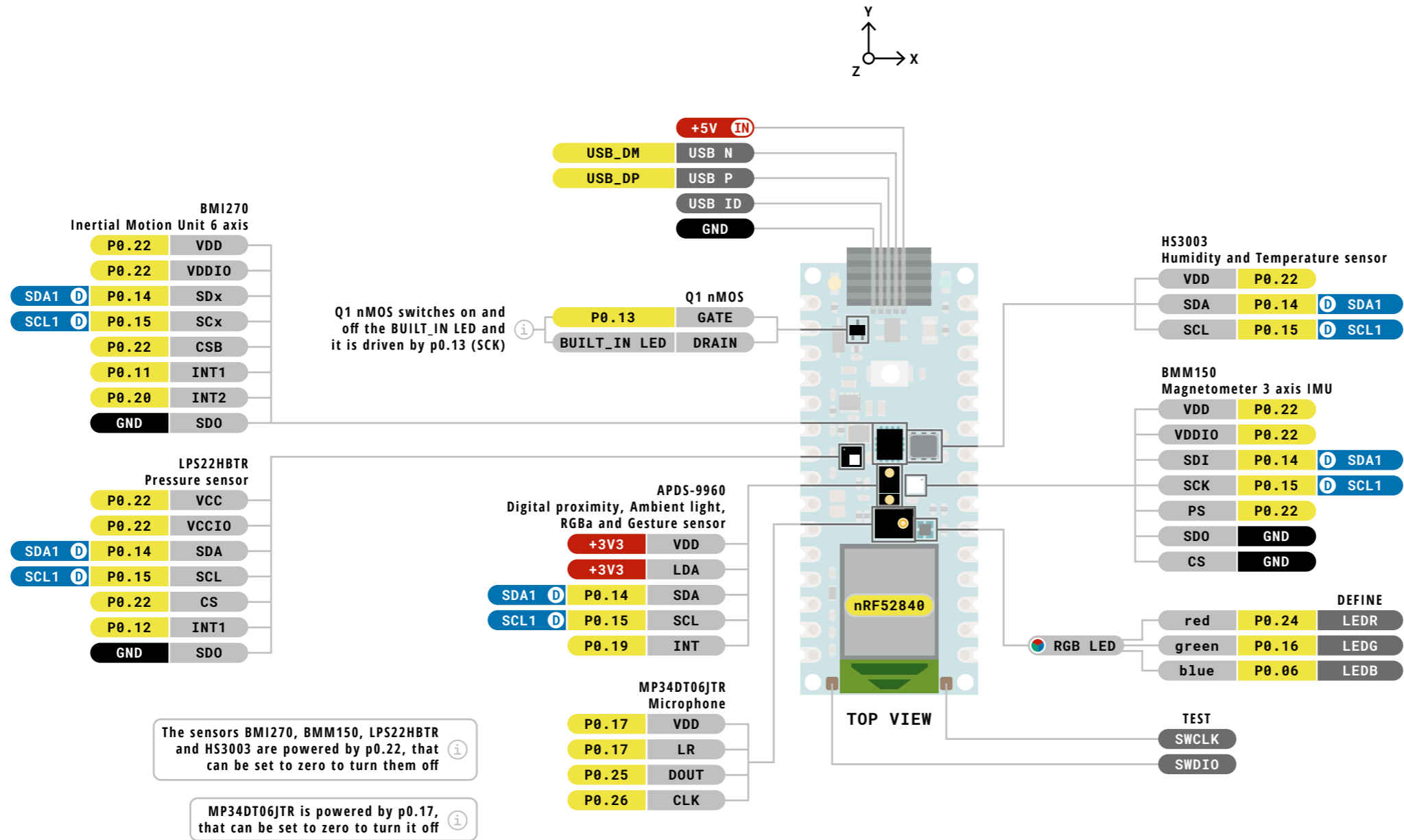
DOCS.ARDUINO.CC This work is licensed under the Creative Commons Attribution-ShareAlike 4.0 International License. To view a copy of this license, visit <http://creativecommons.org/licenses/by-sa/4.0/> or send a letter to Creative Commons, PO Box 1866, Mountain View, CA 94042, USA.

WARNING!

Advanced Section

The following information is for advanced use only and may not be officially supported by Arduino software





Legend:

- Power
- **IN** Power Input
- **OUT** Power Output
- Ground
- GPIO Digital External
- Analog External
- Main Part
- Secondary Part
- Internal Component
- Other Pins (Reset, System Control, Debugging)
- I2C
- SPI
- UART/USART
- Other SERIAL Communication
- Analog
- PWM/Timer
- D Default
- D Default
- D Default
- D Default
- ⚠ LED
- ⚠ RGB LED
- Short Circuit allowed functions

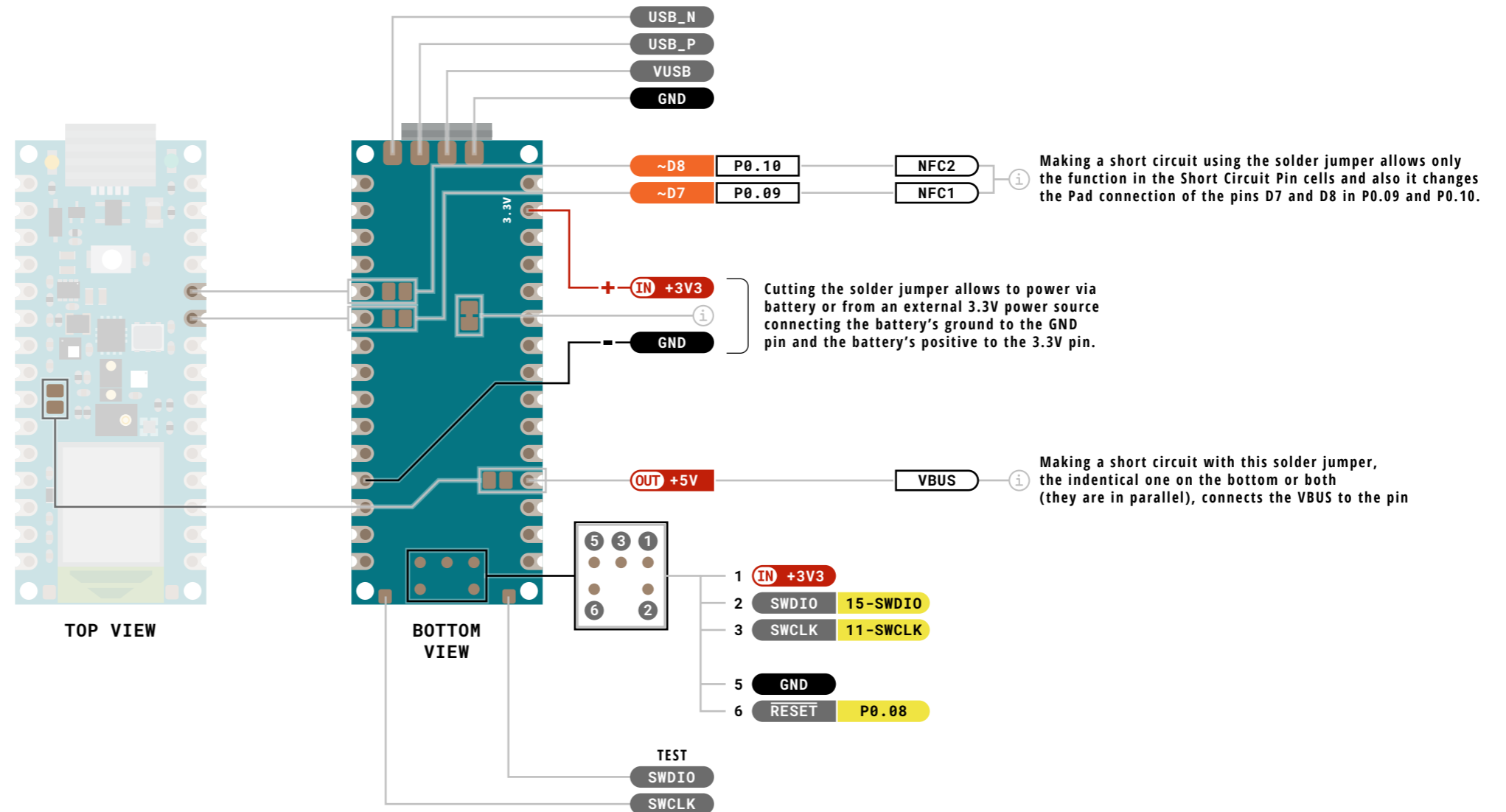
- ⚠ **MAXIMUM** output current per pin is 15mA
- ⚠ **MAXIMUM** input current per pin is 5mA
- ⚠ **MAXIMUM** current overall is 25mA for the sum of all GPIOs and VDDs
- ! **VIN** 5-21V input to the board
- i CIP0/COPI have previously been referred to as MISO/MOSI

NANO 33 SENSE
REV2 BOARD BLE

SKU code: ABX00069
 Full Pinout - Page 3 of 4
 Last update: 22 Dec, 2022

DOCS.ARDUNO.CC

This work is licensed under the Creative Commons Attribution-ShareAlike 4.0 International License. To view a copy of this license, visit <http://creativecommons.org/licenses/by-sa/4.0/> or send a letter to Creative Commons, PO Box 1866, Mountain View, CA 94042, USA.



Legend:

- Power
- IN Power Input
- OUT Power Output
- Ground
- GPIO Digital External
- Analog External
- Main Part
- Secondary Part
- Internal Component
- Other Pins (Reset, System Control, Debugging)
- I2C
- SPI
- UART/USART
- Other SERIAL Communication
- Analog
- PWM/Timer
- D Default
- D Default
- D Default
- D Default

- LED LED
- RGB LED RGB LED
- Short Circuit allowed functions

- ⚠ **MAXIMUM** output current per pin is 15mA
- ⚠ **MAXIMUM** input current per pin is 5mA
- ⚠ **MAXIMUM** current overall is 25mA for the sum of all GPIOs and VDDs
- ! **VIN** 5-21V input to the board
- i CIP0/COPI have previously been referred to as MISO/MOSI

NANO	33	SENSE
REV2	BOARD	BLE

SKU code: ABX00069
 Full Pinout - Page 4 of 4
 Last update: 22 Dec, 2022

DOCS.ARDUINO.CC

This work is licensed under the Creative Commons Attribution-ShareAlike 4.0 International License. To view a copy of this license, visit <http://creativecommons.org/licenses/by-sa/4.0/> or send a letter to Creative Commons, PO Box 1866, Mountain View, CA 94042, USA.