

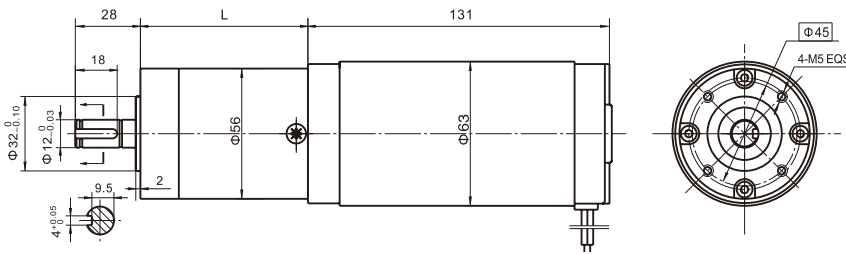


DC Planetary Gear Motor

PG56-63ZY125

Φ56 加强型减速器, 允许转矩范围: 2N.m~30N.m
56mm OD Reinforced Gearbox,
Permissible Load Range: 2N.m~30N.m

● 外形和安装尺寸 Dimensions



● 电动机主要技术参数 Motor Technical Data

电机型号 TYPE	额定电压 Rated voltage VDC	空载转速 No-load speed r/min	空载电流 No-load current A	额定转速 Rated speed r/min	额定转矩 Rated torque mN.m	输出功率 Output power W	额定电流 Rated current A	堵转力矩 Stall torque mN.m	堵转电流 Stall current A
63ZY125-2430	24	3000	0.50	2500	265	65	4.6	950	15.2
63ZY125-2435	24	3500	0.80	2800	320	95	6.0	1100	19.3
63ZY125-2440	24	4000	1.20	3200	450	150	9.0	1200	22.6

● 齿轮减速电机主要技术参数 Gear Motor Technical Data

配置63ZY125-2430直流电机 (63ZY125-2430 DC Motor)

减速比 Reduction ratio	3.6	4.25	7.5	13	15	18	27	32	47	55	65	76	115	135	168
减速级数 Number of gear trains	1	1	1	2	2	2	2	2	3	3	3	3	3	3	4
减速器长度(L) Length(L) mm	53	53	53	61	61	61	61	61	72	72	72	72	72	72	84
空载转速 No-load speed r/min	833	706	400	230	200	167	111	94	64	54	46	39	26	22	18
额定转速 Rated speed r/min	694	588	333	192	167	139	92	78	53	45	38	33	21	18	15
额定转矩 Rated torque N.m	0.85	1.0	1.7	2.7	3.2	3.8	5.7	6.8	9.0	10	12.5	14.7	22	26	30
最大瞬间允许负载 Max. permissible load in a short time N.m	6	6	6	25	25	25	25	25	50	50	50	50	50	50	90

配置63ZY125-2440直流电机 (63ZY125-2440 DC Motor)

减速比 Reduction ratio	3.6	4.25	7.5	13	15	18	27	32	47	55	65	76	115	135	168
减速级数 Number of gear trains	1	1	1	2	2	2	2	2	3	3	3	3	3	3	4
减速器长度(L) Length(L) mm	53	53	53	61	61	61	61	61	72	72	72	72	72	72	84
空载转速 No-load speed r/min	1111	941	533	308	267	222	148	125	85	73	62	53	35	29	24
额定转速 Rated speed r/min	888	752	426	246	213	177	118	100	68	58	49	42	27	24	19
额定转矩 Rated torque N.m	1.4	1.7	3.0	4.7	5.4	6.5	9.8	11	15	18	21	25	30	30	30
最大瞬间允许负载 Max. permissible load in a short time N.m	6	6	6	25	25	25	25	25	50	50	50	50	50	50	90