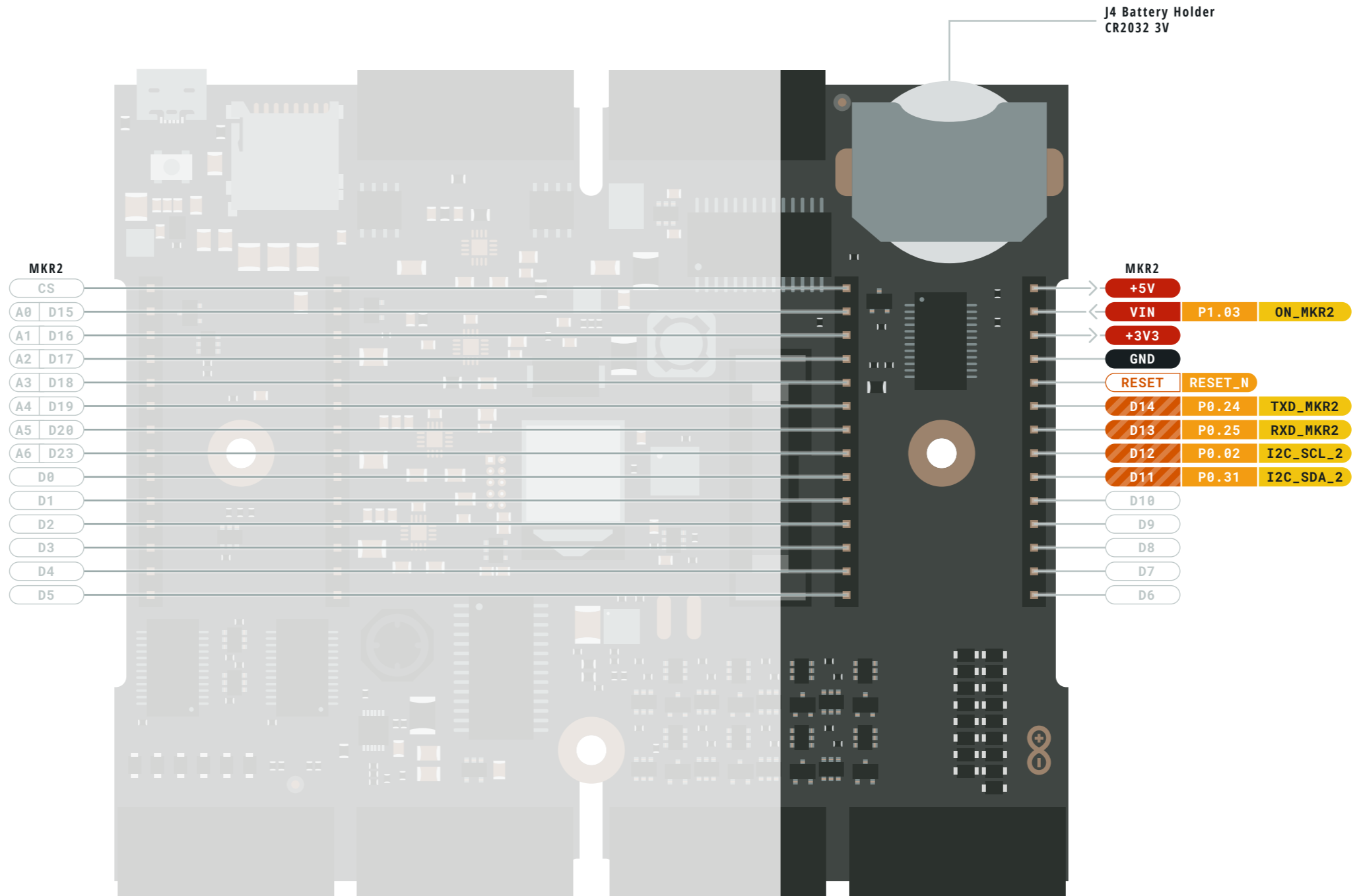


- Ground
- Power
- LED
- Internal Pin
- SWD Pin
- Digital Pin
- Analog Pin
- Other Pin
- Nina-B306 Port
- Default

**⚠ POWER LIMITS**  
Depends on the Board used

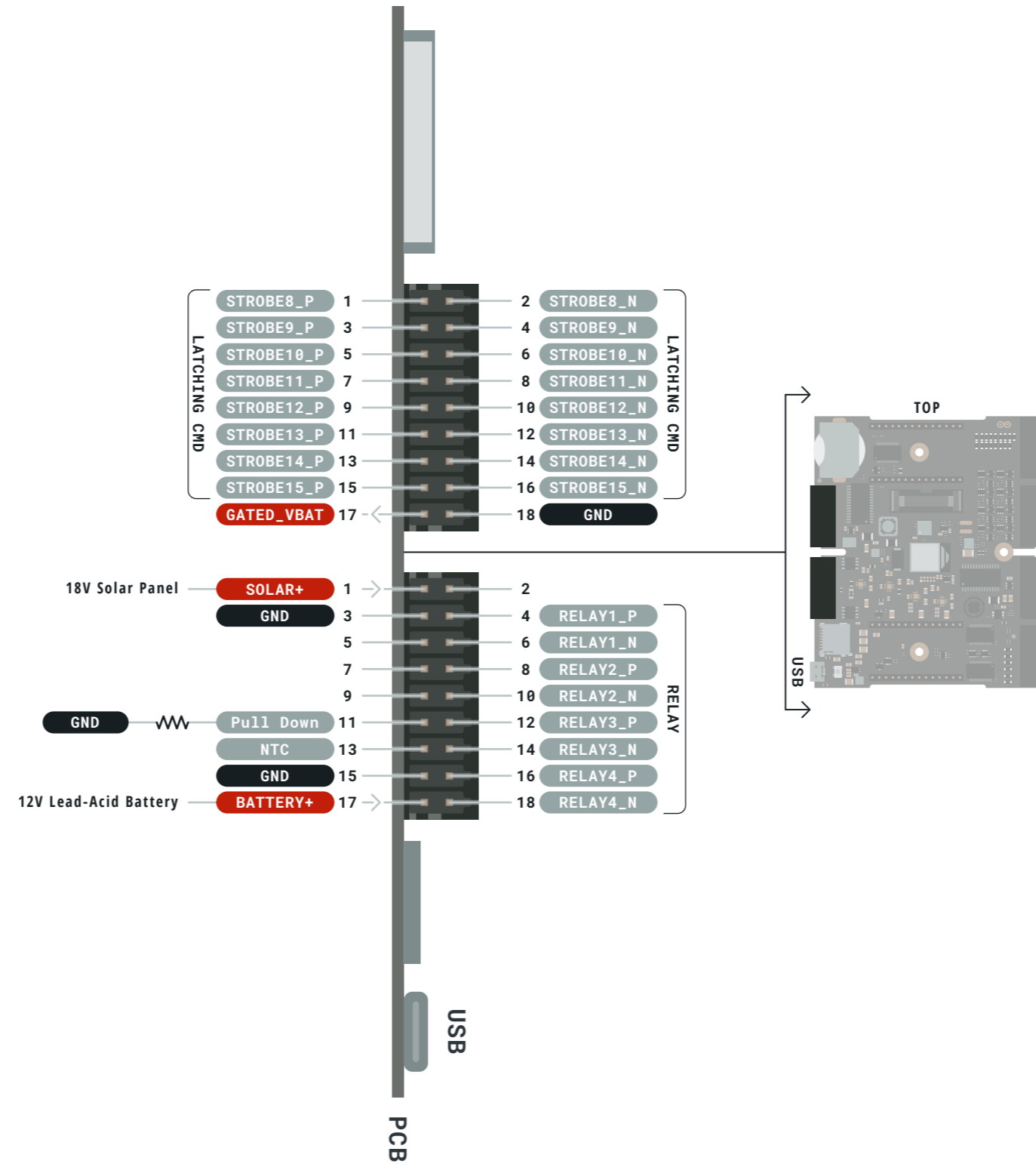




- Ground
- Power
- LED
- Internal Pin
- SWD Pin
- Digital Pin
- Analog Pin
- Other Pin
- Nina-B306 Port
- Default

**⚠ POWER LIMITS**  
Depends on the Board used

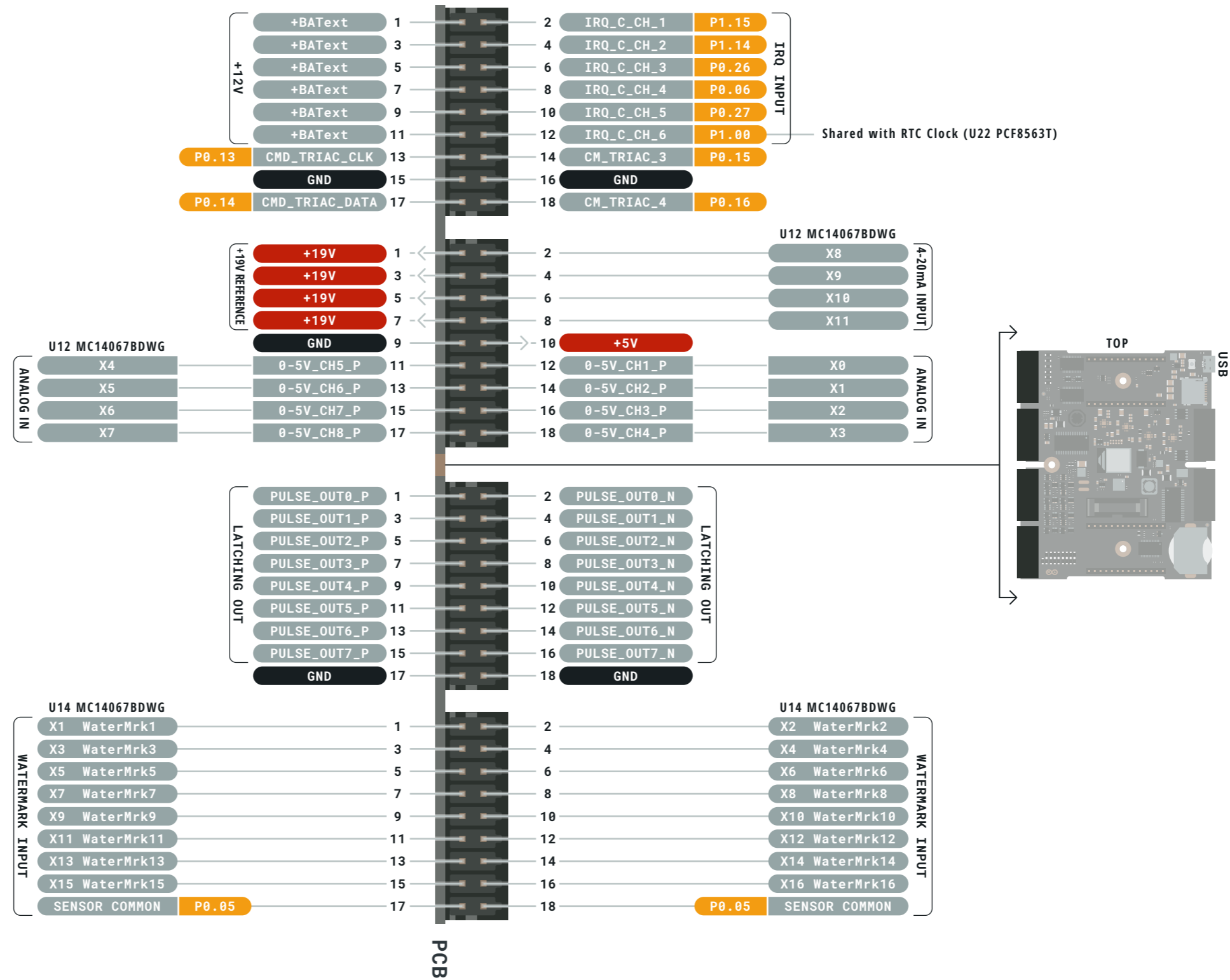




- Ground
- Power
- LED
- Internal Pin
- SWD Pin
- Digital Pin
- Analog Pin
- Other Pin
- Nina-B306 Port
- Default

**⚠ POWER LIMITS**  
Depends on the Board used

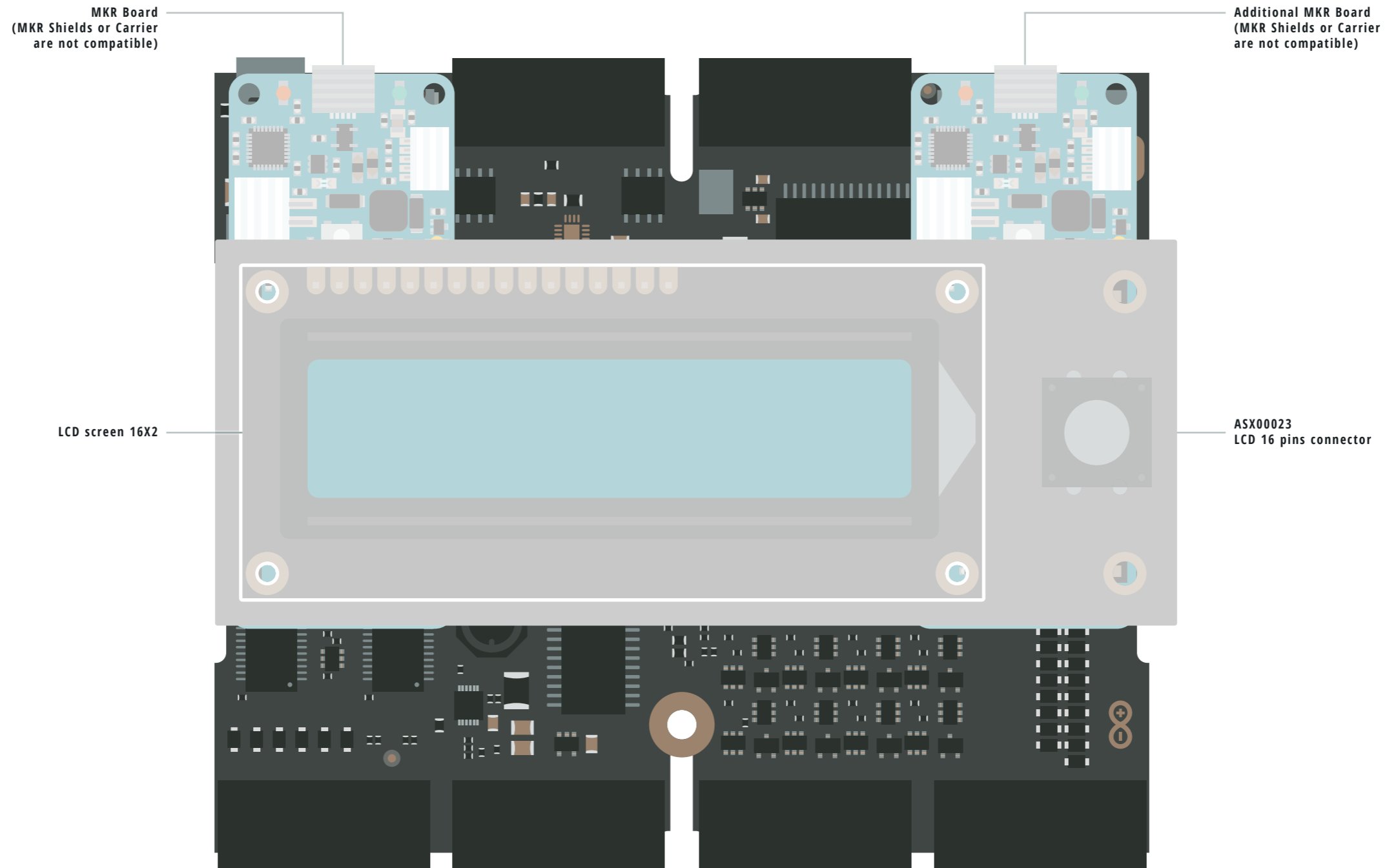




- Ground
- Power
- LED
- Internal Pin
- SWD Pin
- Digital Pin
- Analog Pin
- Other Pin
- Nina-B306 Port
- Default

**⚠ POWER LIMITS**  
Depends on the Board used

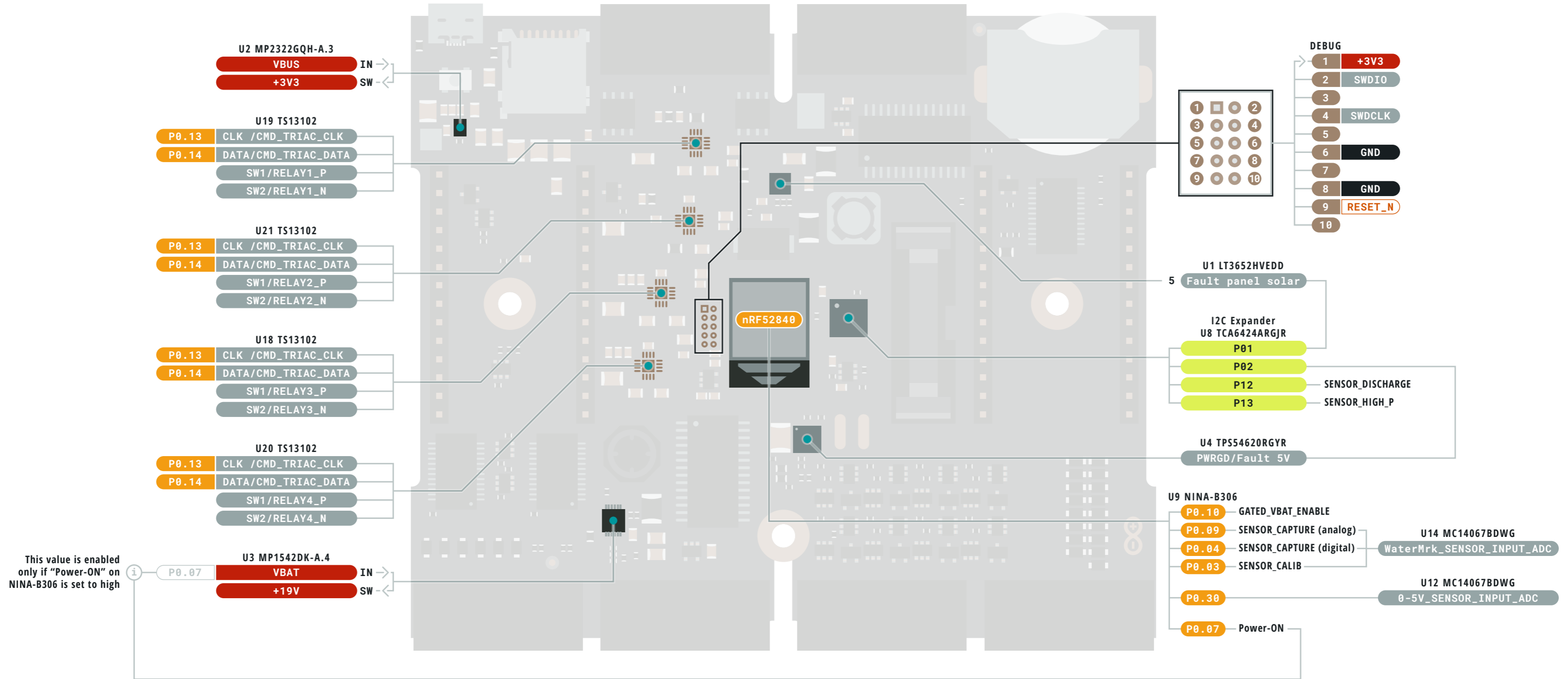




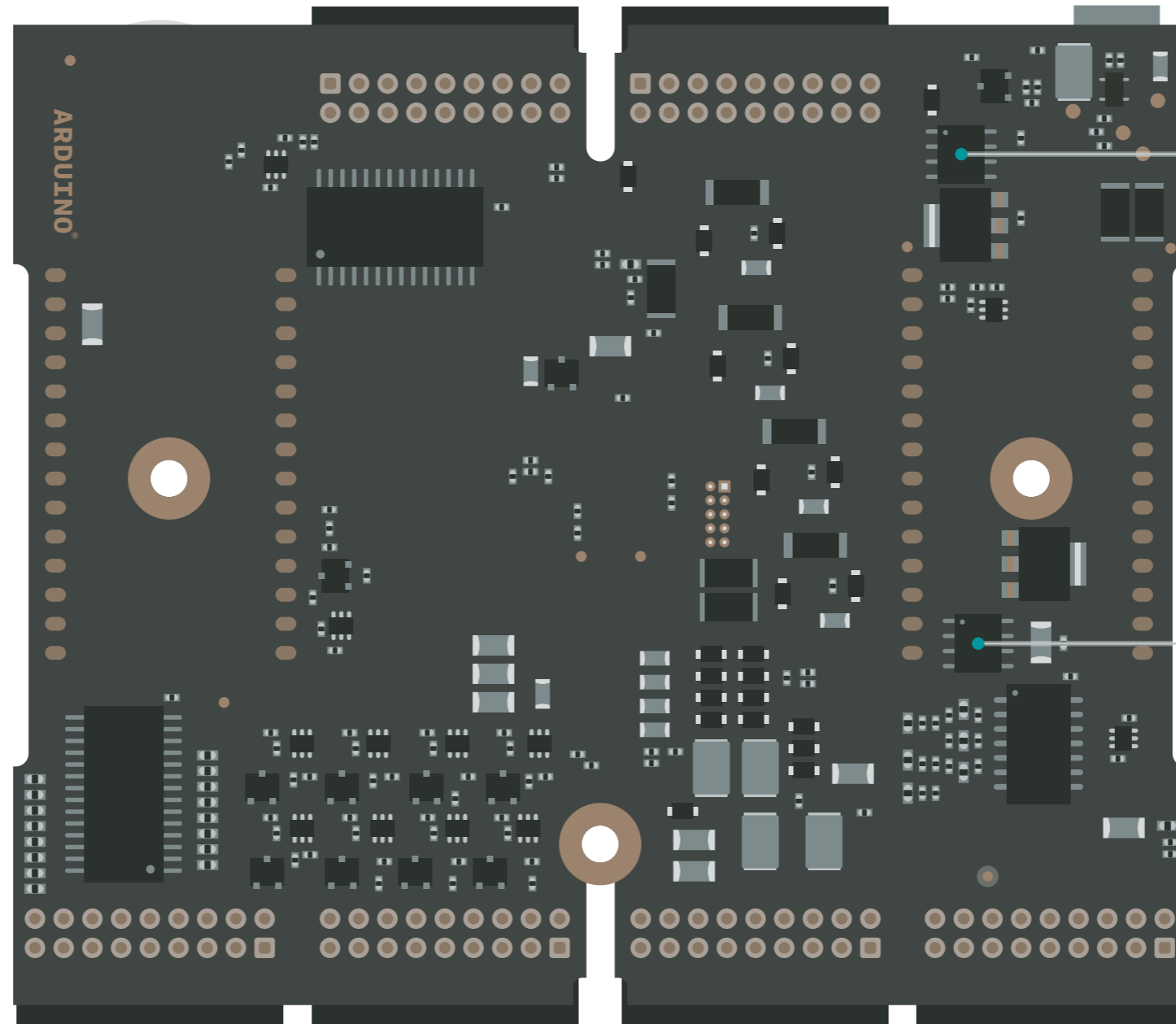
- Ground
- Power
- LED
- Internal Pin
- SWD Pin
- Digital Pin
- Analog Pin
- Other Pin
- Nina-B306 Port
- Default

**POWER LIMITS**  
Depends on the Board used





**BOTTOM**



**Flash**  
U11 W25Q16JVZPIQ

|   |      |                 |
|---|------|-----------------|
| 1 | CS   | QSPIDCS / P0.17 |
| 2 | DO   | QSPID1 / P0.21  |
| 3 | WP   | QSPID2 / P0.22  |
| 4 | GND  |                 |
| 5 | DI   | QSPID0 / P0.20  |
| 6 | CLK  | GPIOCLK / P0.19 |
| 7 | HOLD | QSPID3 / P0.23  |
| 8 | +3V3 |                 |
| 9 | EP   | GND             |

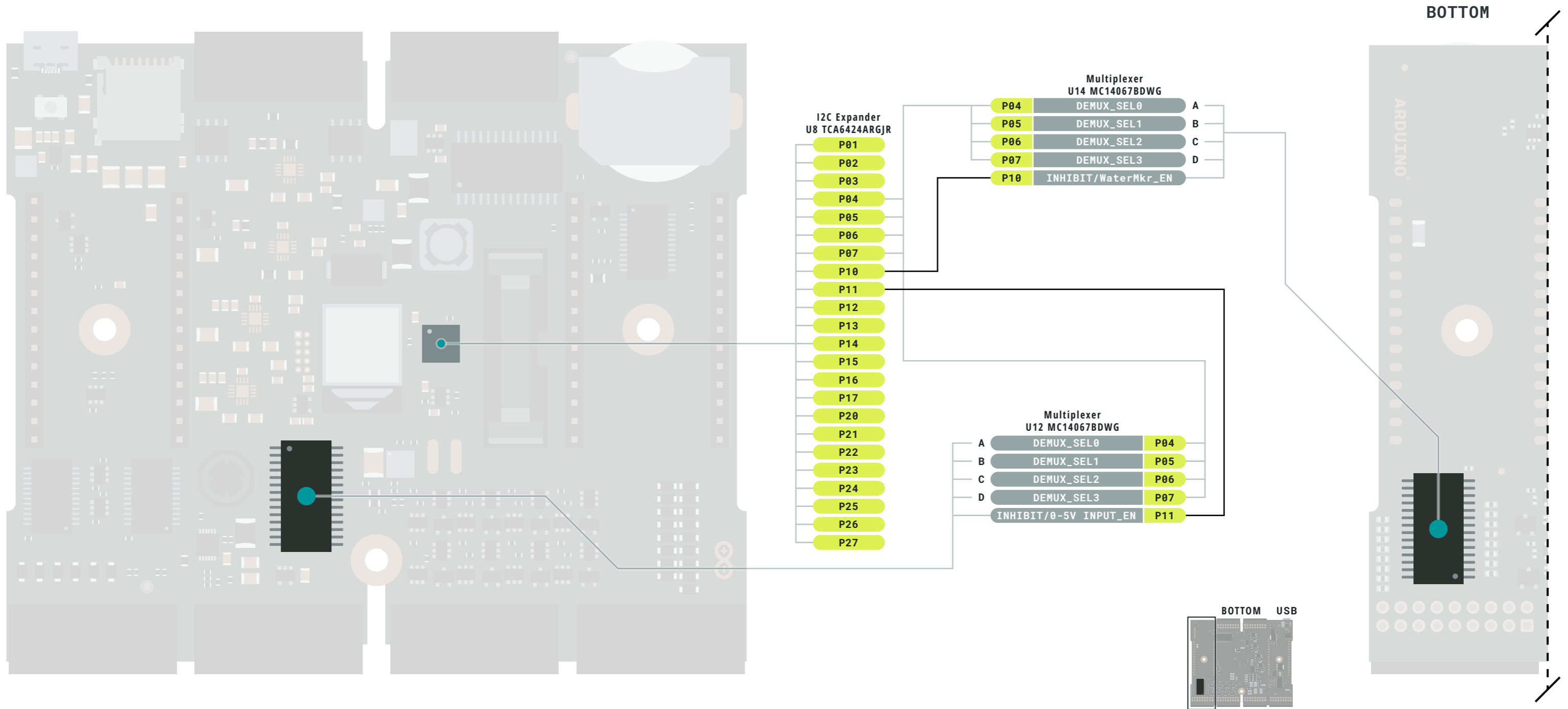
**RTC Clock**  
U22 PCF8563T

|         |       |
|---------|-------|
| I2C_SCL | P1.13 |
| I2C_SDA | P1.09 |
| RTC_INT | P1.00 |
| +3V3    |       |
| GND     |       |

- Ground
- Power
- LED
- Internal Pin
- SWD Pin
- Digital Pin
- Analog Pin
- Other Pin
- Nina-B306 Port
- Default

**⚠ POWER LIMITS**  
Depends on the Board used



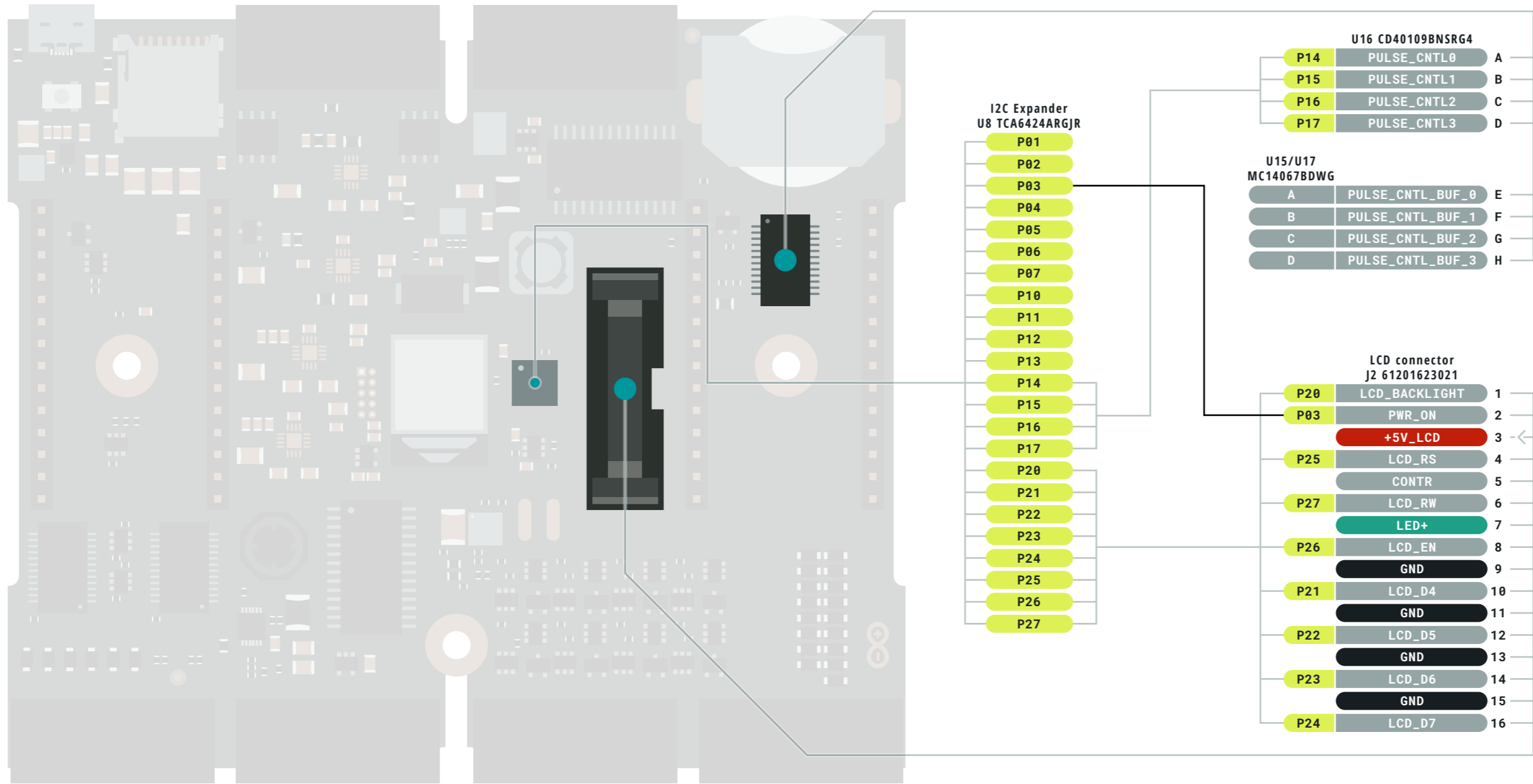


- Ground
- Power
- LED
- Internal Pin
- SWD Pin
- Digital Pin
- Analog Pin
- Other Pin
- Nina-B306 Port
- Default
- I2C Expander Port

**⚠ POWER LIMITS**  
Depends on the Board used





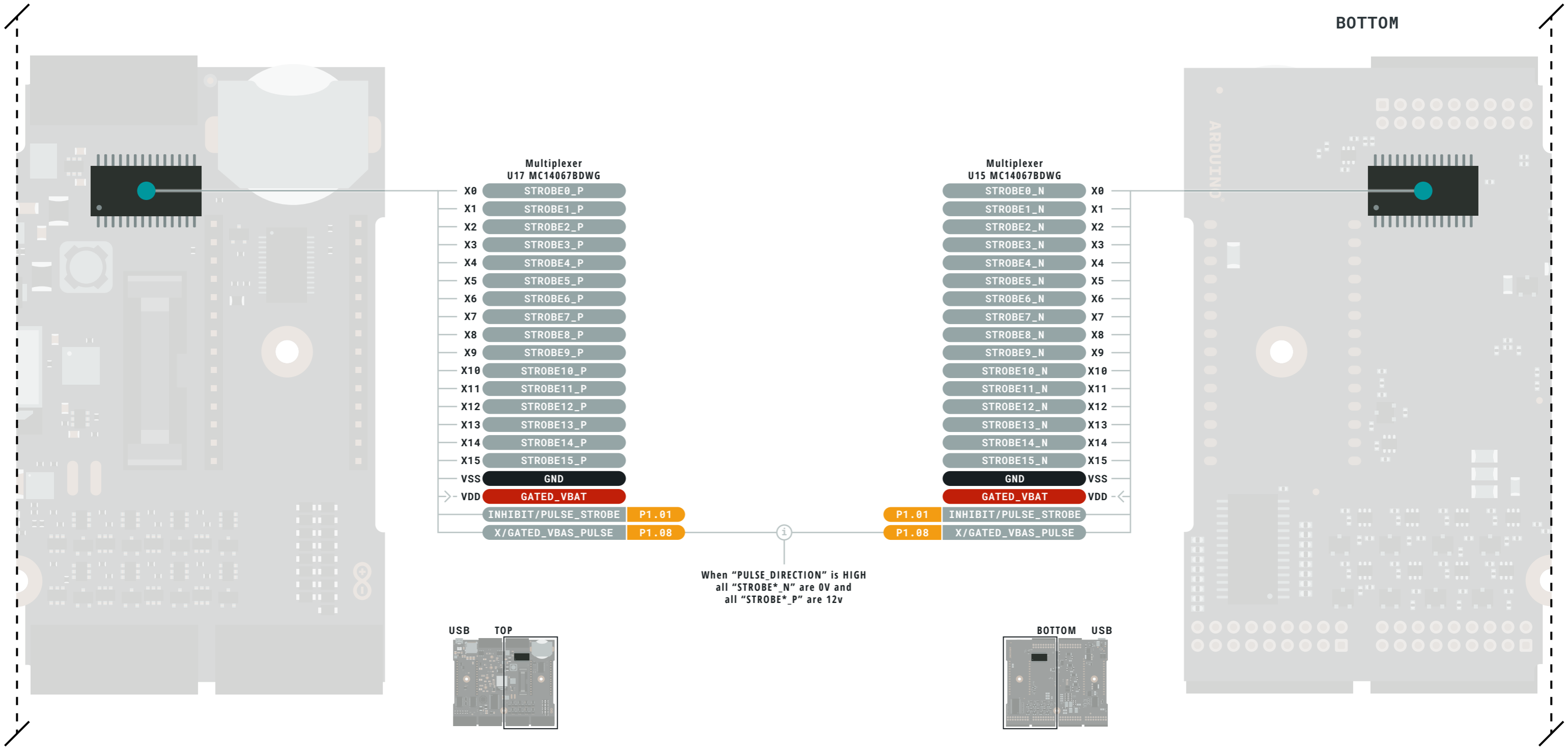


- Ground
- Power
- LED
- Internal Pin
- SWD Pin
- Digital Pin
- Analog Pin
- Other Pin
- Nina-B306 Port
- Default
- I2C Expander Port

**POWER LIMITS**  
Depends on the Board used



**BOTTOM**



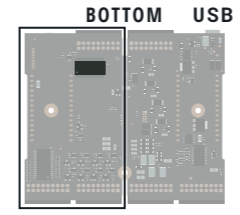
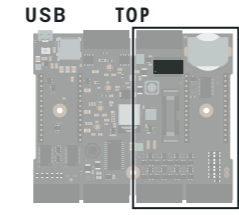
**Multiplexer U17 MC14067BDWG**

|     |                            |
|-----|----------------------------|
| X0  | STROBE0_P                  |
| X1  | STROBE1_P                  |
| X2  | STROBE2_P                  |
| X3  | STROBE3_P                  |
| X4  | STROBE4_P                  |
| X5  | STROBE5_P                  |
| X6  | STROBE6_P                  |
| X7  | STROBE7_P                  |
| X8  | STROBE8_P                  |
| X9  | STROBE9_P                  |
| X10 | STROBE10_P                 |
| X11 | STROBE11_P                 |
| X12 | STROBE12_P                 |
| X13 | STROBE13_P                 |
| X14 | STROBE14_P                 |
| X15 | STROBE15_P                 |
| VSS | GND                        |
| VDD | GATED_VBAT                 |
|     | INHIBIT/PULSE_STROBE P1.01 |
|     | X/GATED_VBAS_PULSE P1.08   |

**Multiplexer U15 MC14067BDWG**

|            |                      |
|------------|----------------------|
| STROBE0_N  | X0                   |
| STROBE1_N  | X1                   |
| STROBE2_N  | X2                   |
| STROBE3_N  | X3                   |
| STROBE4_N  | X4                   |
| STROBE5_N  | X5                   |
| STROBE6_N  | X6                   |
| STROBE7_N  | X7                   |
| STROBE8_N  | X8                   |
| STROBE9_N  | X9                   |
| STROBE10_N | X10                  |
| STROBE11_N | X11                  |
| STROBE12_N | X12                  |
| STROBE13_N | X13                  |
| STROBE14_N | X14                  |
| STROBE15_N | X15                  |
| GND        | VSS                  |
| GATED_VBAT | VDD                  |
| P1.01      | INHIBIT/PULSE_STROBE |
| P1.08      | X/GATED_VBAS_PULSE   |

When "PULSE\_DIRECTION" is HIGH  
all "STROBE\*\_N" are 0V and  
all "STROBE\*\_P" are 12V



- Ground
- Power
- LED
- Internal Pin
- SWD Pin
- Digital Pin
- Analog Pin
- Other Pin
- Nina-B306 Port
- Default

**POWER LIMITS**  
Depends on the Board used



This work is licensed under the Creative Commons Attribution-ShareAlike 4.0 International License. To view a copy of this license, visit <http://creativecommons.org/licenses/by-sa/4.0/> or send a letter to Creative Commons, PO Box 1866, Mountain View, CA 94042, USA.