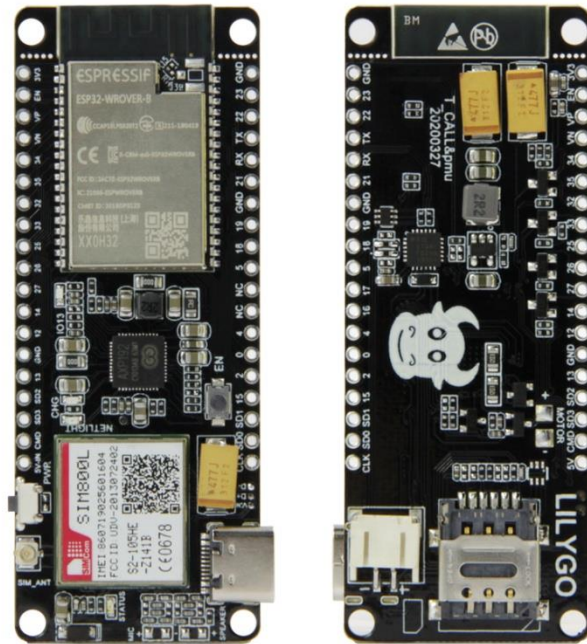


TTGO T-Call&PMU ESP32 Wireless Module SIM Antenna SIM Card SIM800L Module



Product Description

Hardware

Specifications

Chipset	ESPRESSIF-ESP32 240MHz Xtensa® single-/dual-core 32-bit LX6 microprocessor
FLASH	QSPI flash 4MB
SRAM	520 kB SRAM / PSRAM 8MB
Button	Reset
USB to TTL	CP2104
Modular interface	UART、SPI、SDIO、I2C、PWM、I2S、ADC
On-board clock	40MHz crystal oscillator
Working voltage	2.7V-3.6V
Working current	
Sleep current	
SIM card	Only supports Nano SIM card
Working temperature range	-40°C ~ +85°C
Size&Weight	75.15*30.64*10.70mm(14.5g)

Power Supply

Specifications

Power Supply	USB 5V
--------------	--------

Charging current	The charging current is programmable and self-adjustable (default 500mA)
Battery	3.7V lithium battery
JST Connector	2Pin 2.0mm
USB	Type-C
Wi-Fi	Description
Standard	FCC/CE-RED/IC/TELEC/KCC/SRRC/NCC
Protocol	802.11 b/g/n(802.11n, speed up to150Mbps)A-MPDU and A-MSDU polymerization, support 0.4μS Protection interval
Frequency range	2.4GHz~2.5GHz(2400M~2483.5M)
Transmit Power	22dBm
Communication distance	300m

Bluetooth

Protocol	meet bluetooth v4.2BR/EDR and BLE standard
Radio frequency	with -97dBm sensitivity NZIF receiver Class-1,Class-2&Class-3 emitter AFH
Audio frequency	CVSD&SBC audio frequency

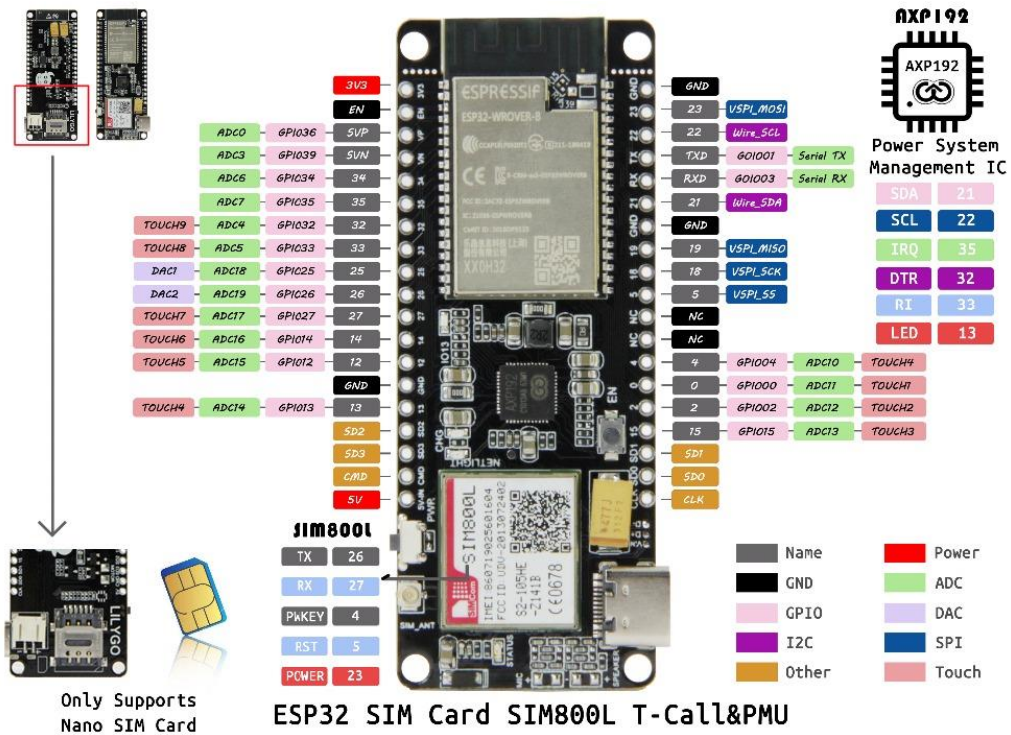
Software specification

Wi-Fi Mode	Station/SoftAP/SoftAP+Station/P2P
Security mechanism	WPA/WPA2/WPA2-Enterprise/WPS
Encryption Type	AES/RSA/ECC/SHA
Firmware upgrade	UART download/OTA (Through network/host to download and write firmware)
Software Development	Support cloud server development /SDK for user firmware development
Networking protocol	IPv4、IPv6、SSL、TCP/UDP/HTTP/FTP/MQTT
User Configuration	AT + Instruction set, cloud server, android/iOSapp
OS	FreeRTOS

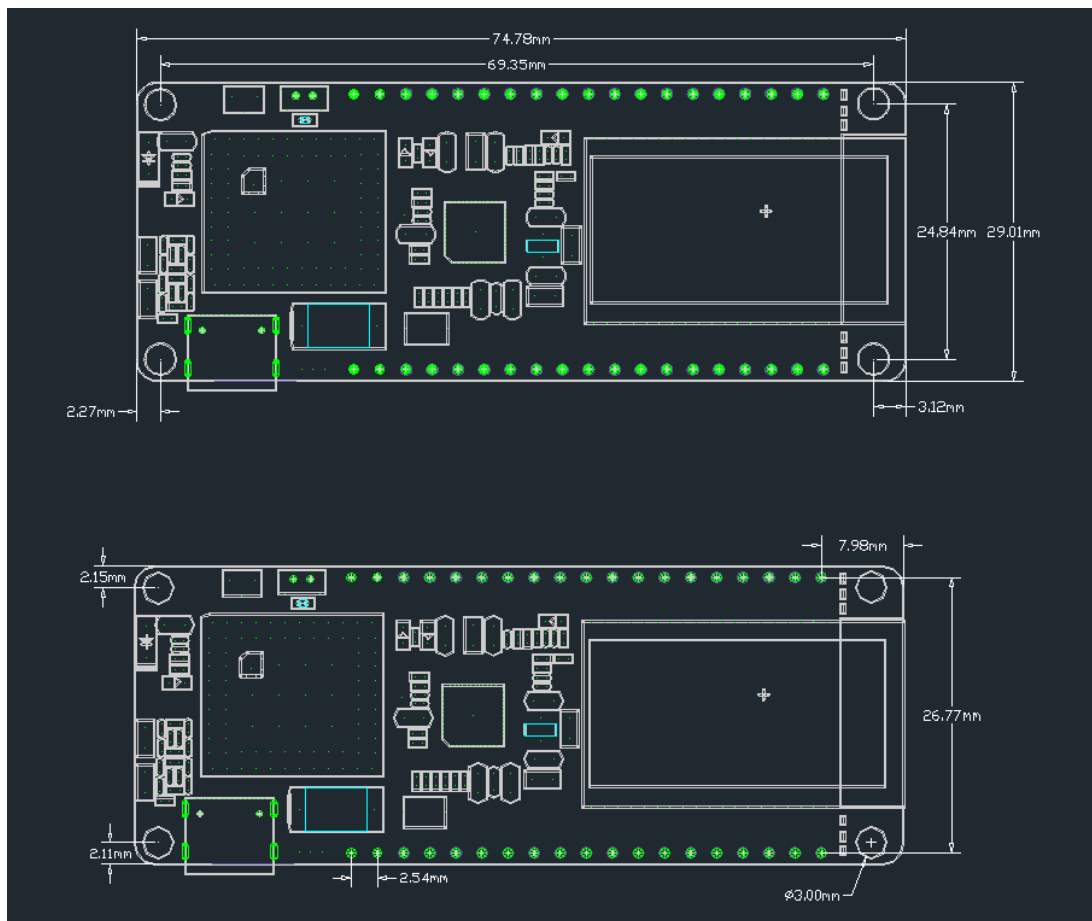
More Information

<https://github.com/Xinyuan-LilyGO/LilyGo-T-Call-SIM800>

T-Call&PMU Pin Diagram:



T-Call&PMU Size Chart



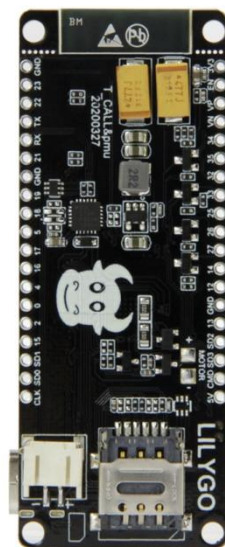
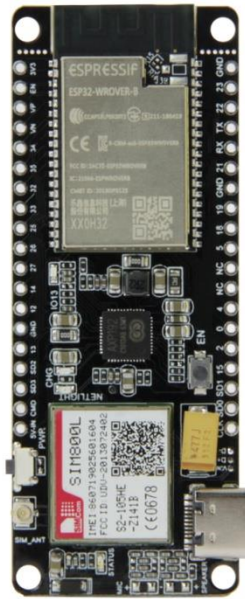
Product Detail

Comparison of T-Call & PMU and T-Call V1.3

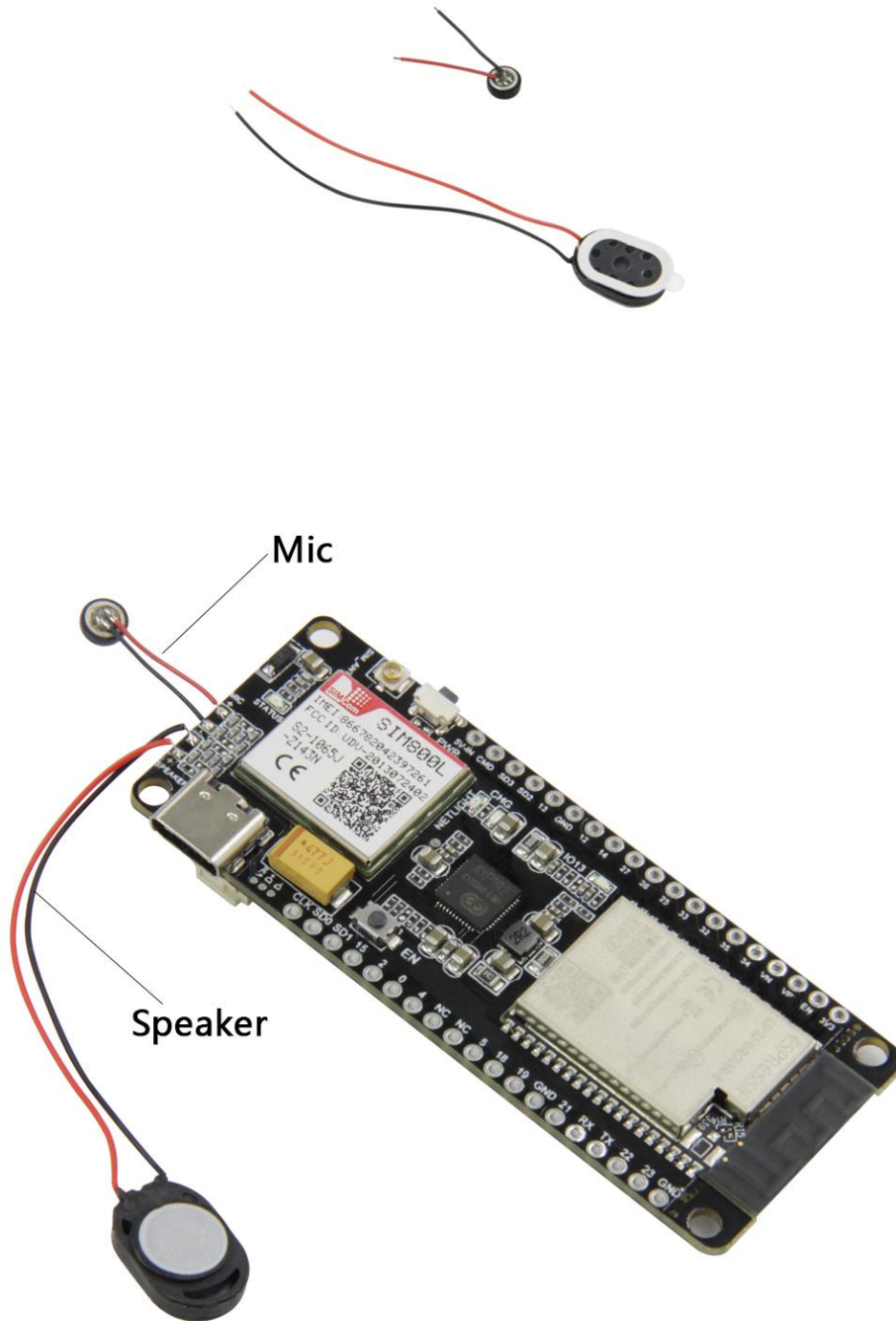
T-Call & PMU and T-Call V1.3 comparison:

AXP192 is the power supply used on the T-Call & PMU board. It is an upgraded version of T-Call V1.3:

1. Change the power IC to AXP192 PMU management, support coulomb counter and high precision voltage and current Test function.
2. SIM800L RI Pin leads to ESP32, can accept voice or data calls, Wake up from received message.
3. The SIM800L DTR Pin leads to SP32, which can wake up SIMM800L from sleep state.



In addition, you can also choose to purchase T-Call & PMU accessories to add your own (shipping does not include welding by default)



Shipping List

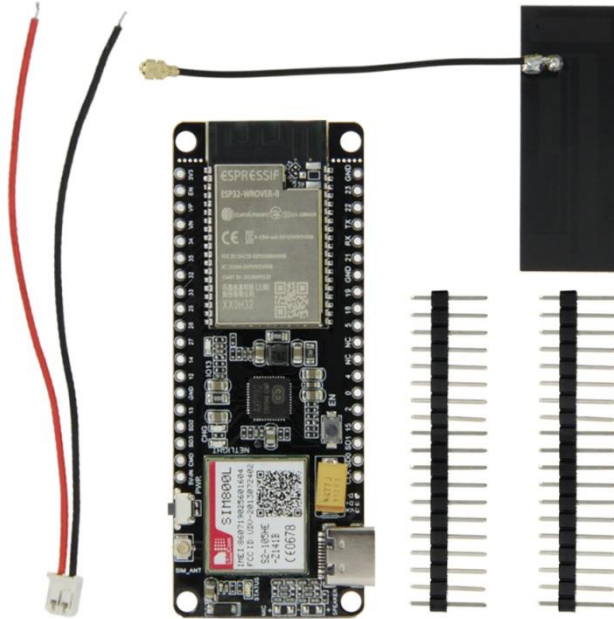
1.T-Call&PMU Version

1 X T-Call&PMU

2 X Pin

1 X SIM Antenna (7 cm)

1 X Power Cable



2.T-Call&PMU Mic Version

1 X T-Call&PMU Mic



3.T-Call&PMU Speaker Version

1 X T-Call&PMU Speaker

