

# KLP02 series diaphragm pump

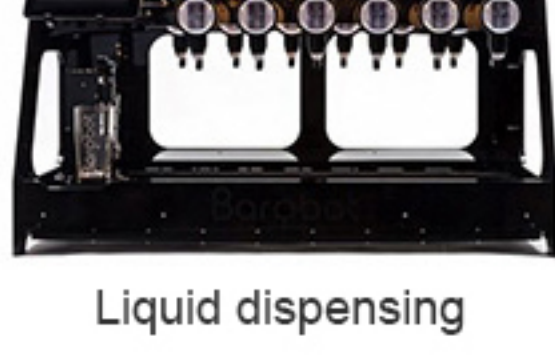
## Second Generation Diaphragm pump



### Applications



Experiment



Liquid dispensing



Inkjet



Medical equipment



Washer machine



Sewage sampling

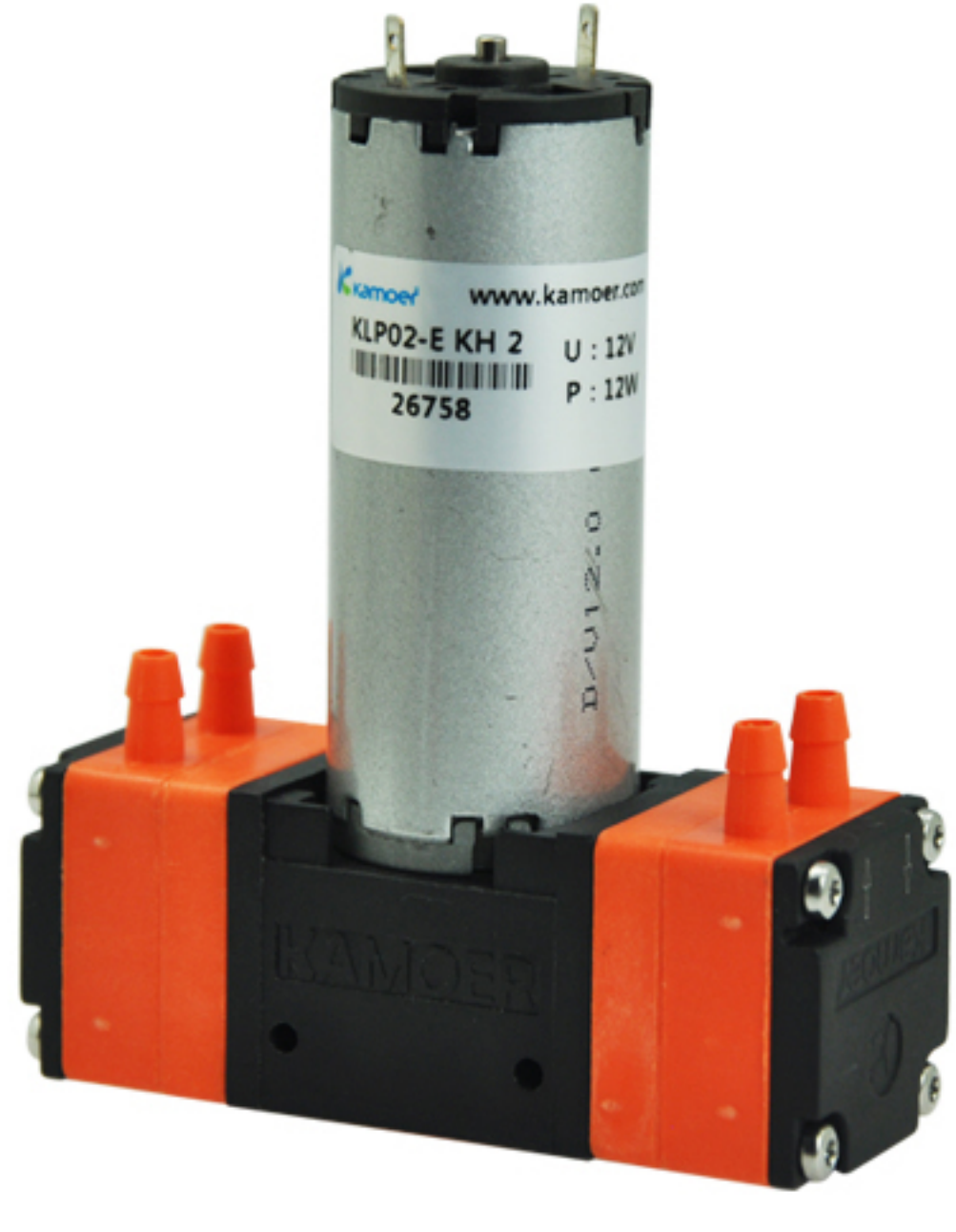
### Parameters

KLP02 micro diaphragm liquid pumps are based on a simple principal of the oscillating displacement pump which is remarkably simple in design. The circular power from the motors is converted into vertical movement by an eccentric. This motion is then transferred to a diaphragm by means of a connecting rod which in conjunction with an inlet and outlet valve creates a pumping action.

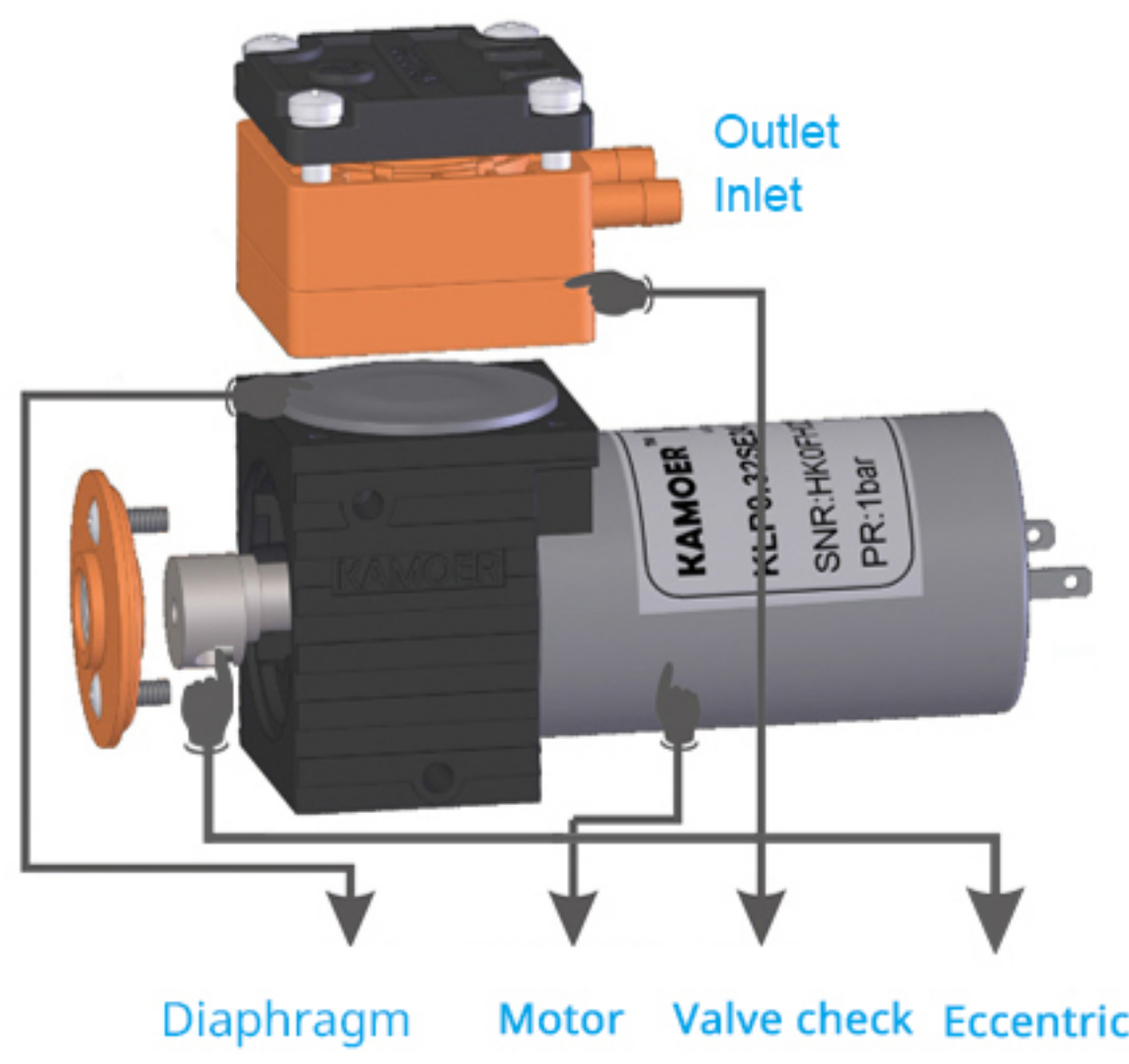
KLP02 type liquid pumps can be mounted in any position and can deliver up to 0.8~1.5L/min depending on the model and will operate against pressure to 3 bar.

### Features

- Self-priming
- Low power consumption
- Long lifetime
- Small size
- Dry running
- Low sound level
- Compact design
- Corrosive liquid available



### Details



### 1. Materials of diaphragm

Currently we provide two materials of diaphragm for selection

Code	Material	Performance
E	EPDM	Decent resistance and tolerance with alcohol, acid, alkali, oxidant, ketone, and grease, etc. Poor oil resistance.
V	FPM	Not sticky and Corrosion resistance.

When you chose the model, please tell us EPDM or FPM in advance, otherwise, we will choose EPDM automatic.

### Specification

Pump head	Code	Flow rate(ml/min)	Positive pressure (Mpa)	Negative pressure (Mpa)	Working Pressure
Single head	E	>700	0.6	0.4	3bar
	V	>800	0.6	0.4	3bar
Double head	E	>1400	0.6	0.4	3bar
	V	>1600	0.6	0.4	3bar

Code	Voltage(V)	Pump head	No-load current (A)	Rated current (A)	Weight (G)
KA	24	1	0.10	0.30	212
KB	24	1	0.13	0.26	250
KC	12	1	0.19	0.36	212
KD	12	1	0.19	0.38	250
KG	24	2	0.23	0.38	336
KH	12	2	0.42	0.69	336

### 2. Motor selection

KA: 24V DC brush motor(56mm)

KB: 24V DC brushless motor(67mm)

KC: 12V DC brush motor(56mm)

KD: 12V DC brushless motor(67mm)

KG: 24V DC brush motor(82.5mm)

KH: 12V DC brushless motor(82.5mm)

### General Specification

Environment temperature range	0~40°C (0 to 104°F) (Note: Freezing must be prevented)
Ambient humidity range	<80% RH
Certifications & Approvals	ISO9001, CE, RoHS

### Size

