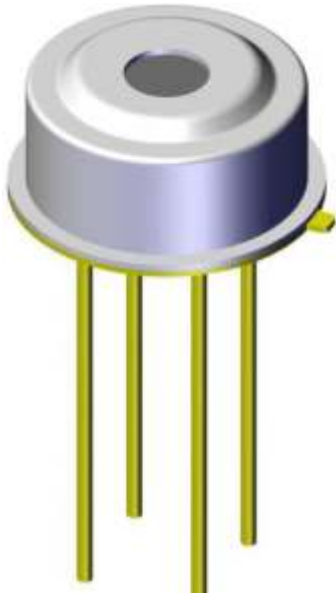


Infrared Thermopile Digital Temperature Sensor

MTP10-DX7



Feature:

- Digital temperature output
- Calibrated over a wide temperature range
- Helps reduce system component parts
- Working temperature range: $-20^{\circ}\text{C}\sim+85^{\circ}\text{C}$

Application:

- Consumer Electronics
- Household Appliances
- HVAC
- Internet of Things

Description:

The MTP10-DX7 is a single-channel digital infrared temperature thermopile sensor that facilitates integration into non-contact temperature measurement applications. The sensor is packaged in a small TO39 and integrates a thermopile temperature sensor, PGA, A/D, DSP, MUX and communication protocol. The MTP10-DX7 is factory calibrated in a wide range, and can work normally in the environment of $-20^{\circ}\text{C}\sim 85^{\circ}\text{C}$, and measure the temperature of objects in the range of $-20^{\circ}\text{C}\sim 300^{\circ}\text{C}$.

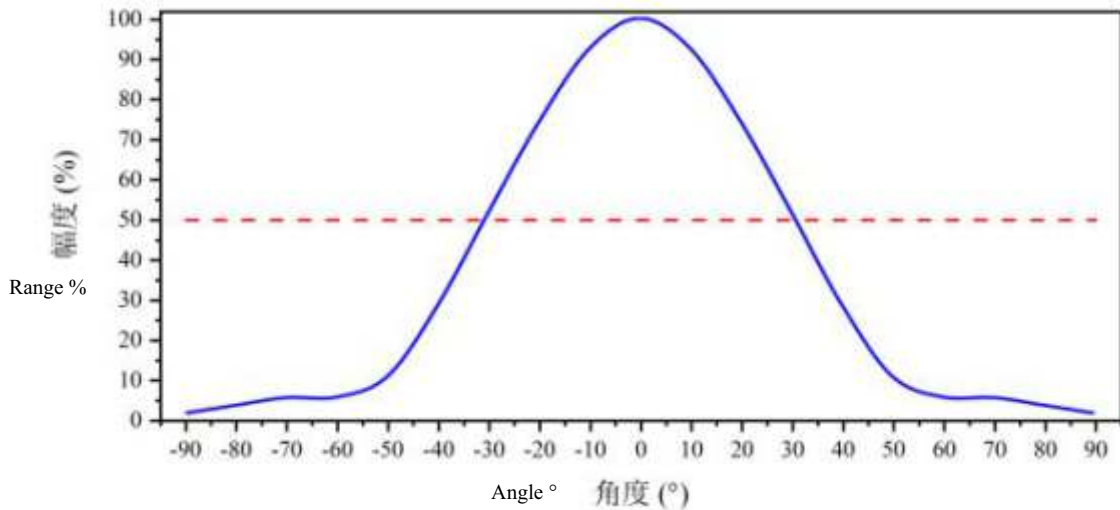
Limit parameters

parameter	value	unit
Working temperature	$-20\sim 85$	$^{\circ}\text{C}$
Storage temperature	$-40\sim 100$	$^{\circ}\text{C}$

Electrical Characteristics

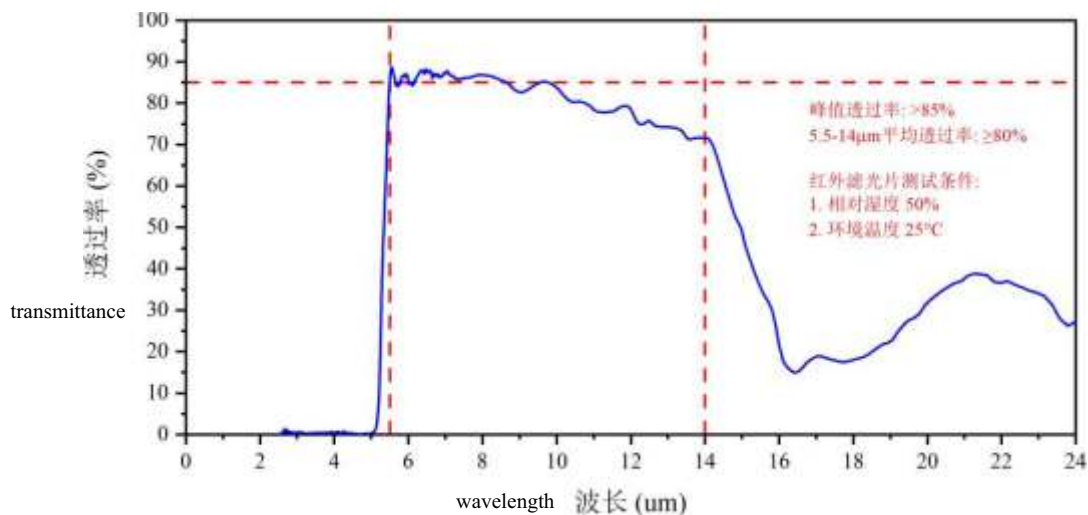
symbol	parameter	condition	minimum	typical	maximum	unit
V_{DD}	Voltage		2.4	3.3	3.6	V
I_{DD}	Current	Continuous mode		600		μA
		Sleep mode		5.0		μA
T_{obj}	Temperature range		-20	-	300	$^{\circ}\text{C}$
T_{Res}	Resolution			0.1		$^{\circ}\text{C}$
FOV	Field of view			62		$^{\circ}$

Optical properties



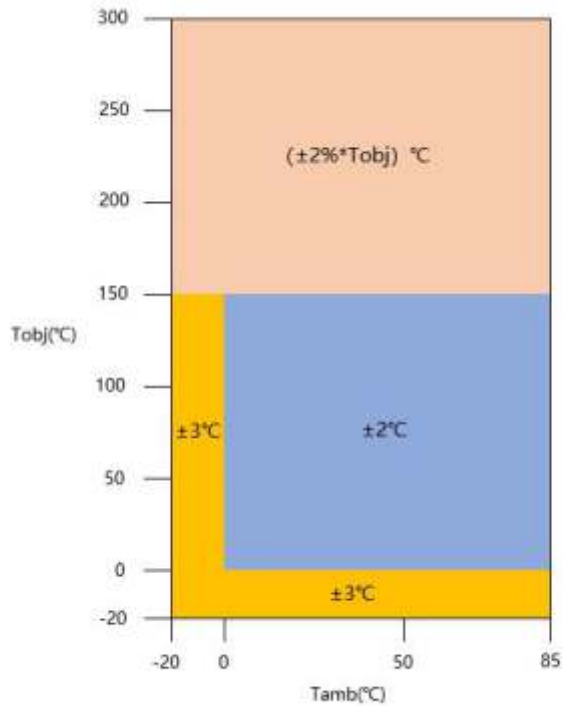
Filter parameters

parameters	value	unit	condition
Transmission wavelength range	5.5~14	um	Long wave pass
Average transmittance	≥80	%	5.5~14um
Average cutoff rate	1	%	<5um



Tobj Measurement accuracy	$\pm 2^{\circ}\text{C} / \pm 2\% * T_{\text{obj}}$	The accuracy is as shown below
---------------------------	--	--------------------------------

Performance graph



Remark:

1. During the test, the sensor and the ambient temperature are equal and fixed, and the object to be tested is full of the FOV field of view

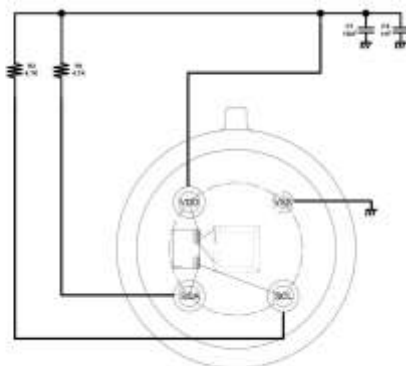
2. Conditions

- Measuring distance: 10cm
- Measured object size: 15cm

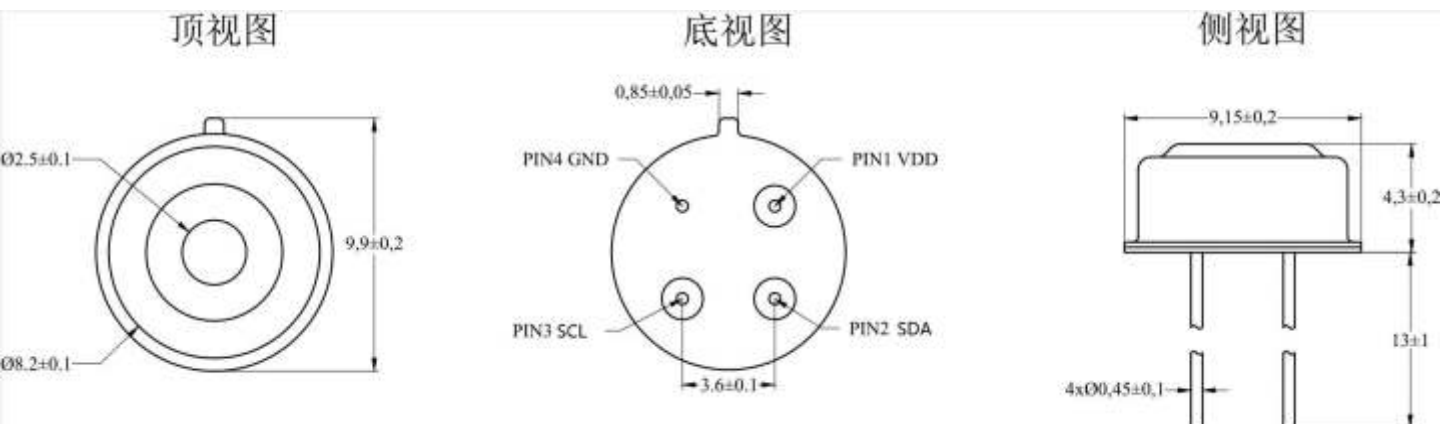
Pin definition:

symbol	pin	pin type	description
VDD	1	P	power supply VDD
SDA	2	IO	IIC data line
SCL	3	IO	IIC clock line
GND	4	P	power ground

Wiring diagram for reference



Dimensions



Revision history

version number	date	description
V1.0.0	2022/11/15	initial release

Shenzhen MemsFrontier Electronics Co. Ltd.

深圳市美思先端电子有限公司

Address: 301, B2 Building, Zhaoshangju Technology Park, Fenghuang street, Guangming District, 518107, Shenzhen, China.

Website: www.memsf.cn

Tel: +86-0755-21386871